

## ON THE BOUNDARY CONTROL OF SYSTEMS OF CONSERVATION LAWS\*

ALBERTO BRESSAN<sup>†</sup> AND GIUSEPPE MARIA COCLITE<sup>†</sup>

**Abstract.** This paper is concerned with the boundary controllability of entropy weak solutions to hyperbolic systems of conservation laws. We prove a general result on the asymptotic stabilization of a system near a constant state. On the other hand, we give an example showing that exact controllability in finite time cannot be achieved, in general.

**Key words.** boundary control, hyperbolic system, conservation laws

**AMS subject classifications.** 35L65, 93C20

**PII.** S0363012901392529

**1. Introduction.** Consider an  $n \times n$  system of conservation laws on a bounded interval:

$$(1.1) \quad u_t + f(u)_x = 0, \quad t \geq 0, \quad x \in ]a, b[.$$

The system is assumed to be strictly hyperbolic, each characteristic field being either linearly degenerate or genuinely nonlinear in the sense of Lax [8]. We shall also assume that all characteristic speeds are bounded away from zero. More precisely, let  $f : \Omega \mapsto \mathbb{R}^n$  be a smooth map defined on an open set  $\Omega \subseteq \mathbb{R}^n$ . For each  $u \in \Omega$ , call  $\lambda_1(u) < \dots < \lambda_n(u)$  the eigenvalues of the Jacobian matrix  $Df(u)$ . We assume that there exist a minimum speed  $c_0 > 0$  and an integer  $p \in \{1, \dots, n\}$  such that

$$(1.2) \quad \begin{cases} \lambda_i(u) < 0 & \text{if } i \leq p, \\ \lambda_i(u) > 0 & \text{if } i > p, \end{cases}$$

$$(1.3) \quad |\lambda_i(u)| \geq c_0 > 0, \quad u \in \Omega.$$

By (1.2), for a solution defined on the strip  $t \geq 0$ ,  $x \in ]a, b[$ , there will be  $n - p$  characteristics entering at the boundary point  $x = a$  and  $p$  characteristics entering at  $x = b$ . The initial-boundary value problem is thus well posed if we prescribe  $n - p$  scalar conditions at  $x = a$  and  $p$  scalar conditions at  $x = b$  [11]. See also [1, 2] for the case of general entropy weak solutions taking values in the space  $BV$  of functions with bounded variation.

In the present paper, we study the effect of boundary conditions on the solution of (1.1) from the point of view of control theory. Namely, given an initial condition

$$(1.4) \quad u(0, x) = \phi(x), \quad x \in ]a, b[,$$

with small total variation, we regard the boundary data as *control functions*, and we study the family of configurations

$$(1.5) \quad \mathcal{R}(T) \doteq \{u(T, \cdot)\} \subset \mathbf{L}^1([a, b]; \mathbb{R}^n),$$

which can be reached by the system at a given time  $T > 0$ .

---

\*Received by the editors July 13, 2001; accepted for publication (in revised form) December 19, 2001; published electronically July 1, 2002.

<http://www.siam.org/journals/sicon/41-2/39252.html>

<sup>†</sup>S.I.S.S.A., Via Beirut 4, Trieste 34014, Italy (bressan@sissa.it, coclita@sissa.it).

Beginning with the simplest case, consider a strictly hyperbolic system with constant coefficients:

$$(1.6) \quad u_t + Au_x = 0,$$

where  $A$  is an  $n \times n$  constant matrix, with real distinct eigenvalues

$$\lambda_1 < \dots < \lambda_p < 0 < \lambda_{p+1} < \dots < \lambda_n.$$

Call

$$\tau \doteq \max_i \frac{b-a}{|\lambda_i|}$$

the maximum time taken by waves to cross the interval  $[a, b]$ . In this case, it is easy to see that the reachable set in (1.5) is the entire space:  $\mathcal{R}(T) = \mathbf{L}^1$  for all  $T \geq \tau$ . In other words, the system is completely controllable after time  $\tau$ . Indeed, for any  $T \geq \tau$  and initial and terminal data  $\phi, \psi \in \mathbf{L}^1([a, b]; \mathbb{R}^n)$ , one can always find a solution of (1.4), defined on the rectangle  $[0, T] \times [a, b]$ , such that

$$u(0, x) = \phi(x), \quad u(T, x) = \psi(x), \quad x \in [a, b].$$

Such a solution can be constructed as follows. Let  $l_1, \dots, l_n$  and  $r_1, \dots, r_n$  be dual bases of right and left eigenvectors of  $A$  so that  $l_i \cdot r_j = \delta_{ij}$ . For  $i = 1, \dots, n$ , let  $u_i(t, x)$  be a solution to the scalar Cauchy problem

$$u_{i,t} + \lambda_i u_{i,x} = 0,$$

$$u_i(0, x) = \begin{cases} l_i \cdot \phi(x) & \text{if } x \in [a, b], \\ l_i \cdot \psi(x + \lambda_i T) & \text{if } x \in [a - \lambda_i T, b - \lambda_i T], \\ 0 & \text{otherwise.} \end{cases}$$

Then the restriction of

$$u(t, x) = \sum_i u_i(t, x) r_i$$

to the interval  $[0, T] \times [a, b]$  satisfies (1.6) and takes the required initial and terminal values. Of course, this corresponds to the solution of an initial-boundary value problem, determined by the  $n$  boundary conditions

$$\begin{cases} l_i \cdot u(t, a) = u_i(t, a), & i = p+1, \dots, n, \\ l_i \cdot u(t, b) = u_i(t, b), & i = 1, \dots, p. \end{cases}$$

This result on exact boundary controllability has been extended in [9, 10] to the case of general quasi-linear systems of the form

$$u_t + A(u)u_x = 0.$$

In this case, the existence of a solution taking the prescribed initial and terminal values is obtained for all sufficiently small data  $\phi, \psi \in \mathcal{C}^1$ .

The aim of the present paper is to study analogous controllability properties within the context of entropy weak solutions  $t \mapsto u(t, \cdot) \in BV$ . For the definitions

and basic properties of weak solutions, we refer to [4]. For general nonlinear systems, it is clear that a complete controllability result within the space  $BV$  cannot hold. Indeed, already for a scalar conservation law, it was proved in [3] that the profiles  $\psi \in BV$  which can be attained at a fixed time  $T > 0$  are only those which satisfy the Oleinik-type conditions

$$\psi'(x) \leq \frac{f'(\psi(x))}{(x-a)f''(\psi(x))} \quad \text{for almost every } x \in [a, b].$$

For general  $n \times n$  systems, a complete characterization of the reachable set  $\mathcal{R}(T)$  does not seem possible, due to the complexity of repeated wave-front interactions.

Our first result is concerned with stabilization near a constant state. Assuming that all characteristic speeds are bounded away from zero, we show that the system can be asymptotically stabilized to any state  $u^* \in \Omega$ , with quadratic rate of convergence.

**THEOREM 1.** *Let  $K$  be a compact, connected subset of the open domain  $\Omega \subset \mathbb{R}^n$ . Then there exist constants  $C_0, \delta, \kappa > 0$  such that the following holds. For every constant state  $u^* \in K$  and every initial data  $u(0) = \phi : [a, b] \mapsto K$  with  $\text{Tot.Var.}\{\phi\} < \delta$ , there exists an entropy weak solution  $u = u(t, x)$  of (1.1) such that, for all  $t > 0$ ,*

$$(1.7) \quad \text{Tot.Var.}\{u(t)\} \leq C_0 e^{-2\kappa t},$$

$$(1.8) \quad \|u(t, x) - u^*\|_{L^\infty} \leq C_0 e^{-2\kappa t}.$$

The proof will be given in section 2. An interesting question is whether the constant state  $u^*$  can be exactly reached in a finite time  $T$ . By the results in [9], this is indeed the case if the initial data has a small  $C^1$  norm. On the contrary, in the final part of this paper, we show that exact controllability in finite time cannot be attained, in general, if the initial data is only assumed to have small total variation.

Our counterexample is concerned with a class of strictly hyperbolic, genuinely nonlinear  $2 \times 2$  systems of the form (1.1). More precisely, we assume the following.

(H) The eigenvalues  $\lambda_i(u)$  of the Jacobian matrix  $A(u) = Df(u)$  satisfy

$$(1.9) \quad -\lambda^* < \lambda_1(u) < -\lambda_* < 0 < \lambda_* < \lambda_2(u) < \lambda^*.$$

Moreover, the right eigenvectors  $r_1(u), r_2(u)$  satisfy the inequalities

$$(1.10) \quad D\lambda_1 \cdot r_1 > 0, \quad D\lambda_2 \cdot r_2 > 0,$$

$$(1.11) \quad r_1 \wedge r_2 < 0, \quad r_1 \wedge (Dr_1 \cdot r_1) < 0, \quad r_2 \wedge (Dr_2 \cdot r_2) < 0.$$

Here  $D\lambda_i, Dr_i$  denote the differentials of the functions  $\lambda_i(u), r_i(u)$ , while  $\wedge$  is the wedge product: if  $v = (v_1, v_2), w = (w_1, w_2)$ , we define

$$v \wedge w \doteq v_1 w_2 - v_2 w_1.$$

A particular system which satisfies the above assumptions is the one studied by DiPerna [7]:

$$\begin{cases} \rho_t + (u\rho)_x = 0, \\ u_t + \left( \frac{u^2}{2} + \frac{K^2}{\gamma-1} \rho^{\gamma-1} \right)_x = 0, \end{cases}$$

with  $1 < \gamma < 3$ . Here  $\rho > 0$  and  $u$  denote the density and the velocity of a gas, respectively.

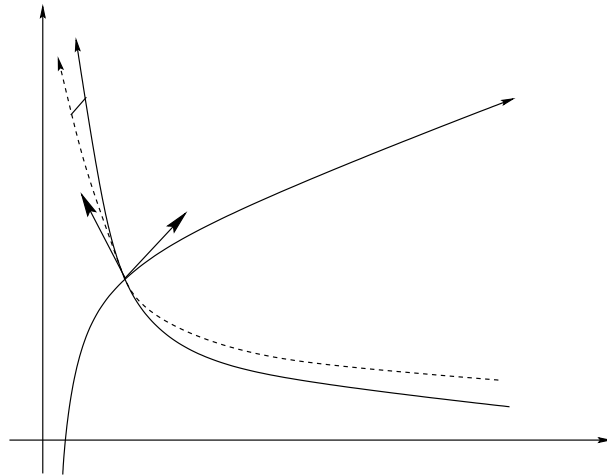


FIG. 1.

The last two inequalities in (1.11) imply that the rarefaction curves (i.e., the integral curves of the vector fields  $(r_1, r_2)$  in the  $(u_1, u_2)$  plane) turn clockwise (Figure 1). In such a case, the interaction of two shocks of the same family generates a shock in the other family.

**THEOREM 2.** *Consider a  $2 \times 2$  system satisfying the assumption (H). Then there exist initial data  $\phi : [a, b] \mapsto \mathbb{R}^2$  having arbitrarily small total bounded variation for which the following holds. For every entropy weak solution  $u$  of (1.1), (1.4), with  $\text{Tot.Var.}\{u(t, \cdot)\}$  remaining small for all  $t$ , the set of shocks in  $u(t, \cdot)$  is dense on  $[a, b]$  for each  $t > 0$ . In particular,  $u(t, \cdot)$  cannot be constant.*

As a preliminary, in section 3, we establish an Oleinik-type estimate on the decay of positive waves. This bound is of independent interest and sharpens the results in [5] for systems satisfying the additional conditions (H).

As a consequence, this implies that positive waves are “weak” and cannot completely cancel a shock within finite time. The proof of Theorem 2 is then achieved by an induction argument. We show that, if the set of 1-shocks is dense on  $[0, T] \times [a, b]$ , then the set of points  $P_j = (t_j, x_j)$ , where two 1-shocks interact and create a new 2-shock, is also dense on the same domain. Therefore, new shocks are constantly generated, and the solution can never be reduced to a constant. Details of the proof will be given in section 4.

As in [9], all of the above results refer to the case where total control on the boundary values is available. As a consequence, the problem is reduced to proving the existence (or nonexistence) of an entropy weak solution defined on the open strip  $t > 0$ ,  $x \in ]a, b[$ , satisfying the required conditions. This is a first step toward the analysis of more general controllability problems, where the control acts only on some of the boundary conditions. We thus leave open the case where a subset of indices  $I \subset \{1, \dots, n\}$  is given, and one requires

$$l_i \cdot u(t, a) = \begin{cases} \alpha_i(t) & \text{if } i \in I, \\ 0 & \text{if } i \notin I, \end{cases} \quad i = p + 1, \dots, n,$$

$$l_i \cdot u(t, b) = \begin{cases} \alpha_i(t) & \text{if } i \in I, \\ 0 & \text{if } i \notin I, \end{cases} \quad i = 1, \dots, p,$$

for some control functions  $\alpha_i$  acting only on the components  $i \in I$ .

Throughout the following, we denote by  $r_i(u), l_i(u)$  the right and left  $i$ -eigenvectors of the Jacobian matrix  $A(u) \doteq Df(u)$ . As in [4], we write  $\sigma \mapsto R_i(\sigma)(u_0)$  for the parametrized  $i$ -rarefaction curve through the state  $u_0$  so that

$$\frac{d}{d\sigma}R_i(\sigma) = r_i(R_i(\sigma)), \quad R_i(0) = u_0.$$

The  $i$ -shock curve through  $u_0$  is denoted by  $\sigma \mapsto S_i(\sigma)(u_0)$ . It satisfies the Rankine–Hugoniot equations

$$f(S_i(\sigma)) - f(u_0) = \lambda_i(\sigma) (S_i(\sigma) - u_0)$$

for some shock speed  $\lambda_i$ . We recall (see [4, Chap. 5]) that the general Riemann problem is solved in terms of the composite curves

$$(1.12) \quad \Psi_i(u_0)(\sigma) = \begin{cases} R_i(u_0)(\sigma) & \text{if } \sigma \geq 0, \\ S_i(u_0)(\sigma) & \text{if } \sigma < 0. \end{cases}$$

**2. Proof of Theorem 1.** The proof relies on the following two lemmas.

LEMMA 1. *In the setting of Theorem 1, there exists a time  $T > 0$  such that the following holds. For every pair of states  $\omega, \omega' \in K$ , there exists an entropic solution  $u = u(t, x)$  of (1.1) such that*

$$(2.1) \quad u(0, x) \equiv \omega, \quad u(T, x) \equiv \omega' \quad \text{for all } x \in [a, b].$$

*Proof.* Consider the function

$$(2.2) \quad \Phi(\sigma_1, \dots, \sigma_n; v, v') \doteq \Psi_n(\sigma_n) \circ \dots \circ \Psi_{p+1}(\sigma_{p+1})(v') - \Psi_p(\sigma_p) \circ \dots \circ \Psi_1(\sigma_1)(v).$$

Observe that, whenever  $v = v'$ , the  $n \times n$  Jacobian matrix  $\partial\Phi/\partial\sigma_1 \dots \sigma_n$  computed at  $\sigma_1 = \sigma_2 = \dots = \sigma_n = 0$  has full rank. Indeed, the columns of this matrix are given by the linearly independent vectors  $-r_1(v), \dots, -r_p(v), r_{p+1}(v), \dots, r_n(v)$ . By the implicit function theorem and a compactness argument, we can find  $\delta > 0$  such that the following holds. For every  $v, v' \in K$ , with  $|v - v'| \leq \delta$ , there exist unique values  $\sigma_1, \dots, \sigma_n$  such that

$$(2.3) \quad v'' \doteq \Psi_n(\sigma_n) \circ \dots \circ \Psi_{p+1}(\sigma_{p+1})(v') = \Psi_p(\sigma_p) \circ \dots \circ \Psi_1(\sigma_1)(v).$$

Defining the time as

$$(2.4) \quad \tau \doteq \max_{1 \leq i \leq n} \sup_{u \in \Omega} \frac{b - a}{|\lambda_i(u)|},$$

we claim that there exists an entropy weak solution  $u : [0, 2\tau] \times [a, b] \mapsto \Omega$  such that

$$(2.5) \quad u(0, x) \equiv v, \quad u(2\tau, x) \equiv v'.$$

The function  $u$  is constructed as follows (see Figure 2). For  $t \in [0, \tau]$ , we let  $u$  be the solution of the Riemann problem

$$(2.6) \quad u(0, x) = \begin{cases} v & \text{if } x < b, \\ v'' & \text{if } x > b. \end{cases}$$

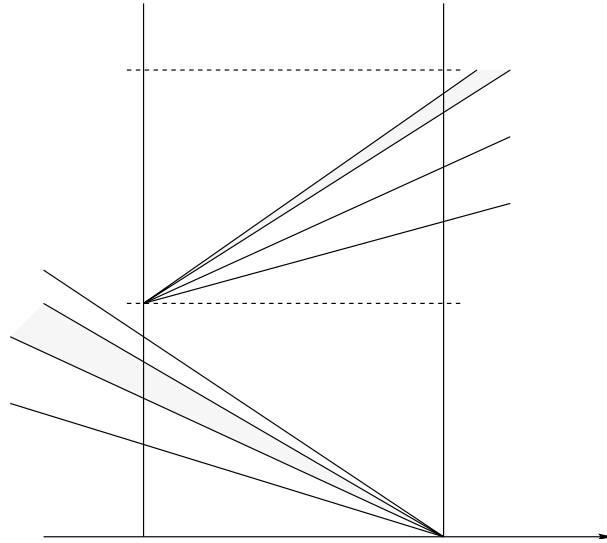


FIG. 2.

Moreover, for  $t \in [\tau, 2\tau]$ , we define  $u$  as the solution of the Riemann problem

$$(2.7) \quad u(\tau, x) = \begin{cases} v' & \text{if } x < a, \\ v'' & \text{if } x > a. \end{cases}$$

It is now clear that the restriction of  $u$  to the domain  $[0, 2\tau] \times [a, b]$  satisfies the conditions in (2.5). Indeed, by (2.3), on  $[0, \tau]$  the solution  $u$  contains only waves of families  $\leq p$ , originating at the point  $(0, b)$ . By (2.4), these waves cross the whole interval  $[a, b]$  and exit from the boundary point  $a$  before time  $\tau$ . Hence  $u(\tau, x) \equiv v''$ . Similarly, still by (2.3), for  $t \in [\tau, 2\tau]$ , the function  $u$  contains only waves of families  $\geq p + 1$ , originating at the point  $(\tau, a)$ . By (2.4), these waves cross the whole interval  $[a, b]$  and exit from the boundary point  $b$  before time  $2\tau$ . Hence  $u(2\tau, x) \equiv v'$ .

Next, given any two states  $\omega, \omega' \in K$ , by the connectedness assumption, we can find a chain of points  $\omega_0 = \omega, \omega_1, \dots, \omega_N = \omega'$  in  $K$  such that  $|\omega_i - \omega_{i-1}| < \delta$  for every  $i = 1, \dots, N$ . Repeating the previous construction in connection with each pair of states  $(\omega_{i-1}, \omega_i)$ , we thus obtain an entropy weak solution  $u : [0, 2N\tau] \times [a, b] \mapsto \Omega$  that satisfies the conclusion of the lemma, with  $T = 2N\tau$ .  $\square$

In the following, we shall construct the desired solution  $u = u(t, x)$  as the limit of a sequence of front tracking approximations. Roughly speaking, an  $\varepsilon$ -approximate front tracking solution is a piecewise constant function  $u^\varepsilon$ , having jumps along a finite set of straight lines in the  $t$ - $x$  plane, say,  $x = x_\alpha(t)$ , which approximately satisfies the Rankine–Hugoniot equations:

$$\sum_{\alpha} |f(u(t, x_{\alpha+})) - f(u(t, x_{\alpha-})) - \dot{x}_{\alpha} (u(t, x_{\alpha+}) - u(t, x_{\alpha-}))| < \varepsilon$$

for all  $t > 0$ . For details, see [4, p. 125].

LEMMA 2. *In the setting of Theorem 1, for every state  $u^* \in \Omega$ , there exist constants  $C, \delta_0 > 0$  for which the following holds. For any  $\varepsilon > 0$  and every piecewise constant function  $\bar{u} : [a, b] \mapsto \Omega$  such that*

$$(2.8) \quad \rho \doteq \sup_{x \in [a, b]} |\bar{u}(x) - u^*| \leq \delta_0, \quad \delta \doteq \text{Tot.Var.}\{\bar{u}\} \leq \delta_0,$$

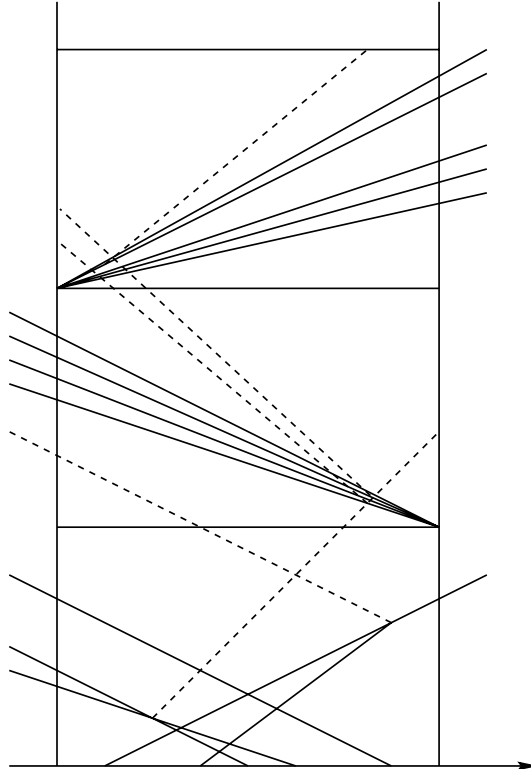


FIG. 3.

there exists an  $\varepsilon$ -approximate front tracking solution  $u = u(t, x)$  of (1.1), with  $u(0, x) = \bar{u}(x)$ , such that

$$(2.9) \quad \sup_{x \in [a, b]} |u(3\tau, x) - u^*| \leq C\delta^2, \quad \text{Tot.Var.}\{u(3\tau)\} \leq C\delta^2.$$

*Proof.* On the domain  $(t, x) \in [0, \tau] \times [a, b]$ , we construct  $u$  as an  $\varepsilon$ -approximate front tracking solution in such a way that, whenever a front hits one of the boundaries  $x = a$  or  $x = b$ , no reflected front is ever created (see Figure 3). Since all fronts emerging from the initial data  $\bar{u}$  at time  $t = 0$  exit from  $[a, b]$  within time  $\tau$ , it is clear that  $u(\tau)$  can contain only fronts of second or higher generation order. In other words, the only fronts that can be present in  $u(\tau, \cdot)$  are the new ones, generated by interactions at times  $t > 0$  (the dotted lines in Figure 3). Therefore, using the interaction estimate (7.69) in [4], we obtain

$$(2.10) \quad \sup_{x \in [a, b]} |u(\tau, x) - u^*| = \mathcal{O}(1) \cdot (\rho + \delta), \quad \text{Tot.Var.}\{u(\tau)\} = \mathcal{O}(1) \cdot \delta^2.$$

We now apply a similar procedure as in the proof of Lemma 1 and construct a solution on the interval  $[\tau, 3\tau]$  in such a way that  $u(3\tau) \approx u^*$ . More precisely, to construct  $u$  on the domain  $[\tau, 2\tau] \times [a, b]$ , consider the state  $v''$  implicitly defined by (2.2), with  $v \doteq u(\tau, b-)$ ,  $v' \doteq u^*$ . On a forward neighborhood of the point  $(\tau, b)$ , we let  $u$  coincide with (a front tracking approximation of) the solution to the Riemann problem

$$u(\tau, x) = \begin{cases} u(\tau, b-) & \text{if } x < b, \\ v'' & \text{if } x > b. \end{cases}$$

This procedure will introduce at the point  $(\tau, b)$  a family of wave-fronts of families  $i = 1, \dots, p$ , whose total strength is  $\mathcal{O}(1) \cdot (\rho + \delta)$ . Because of (2.4), all of these fronts will exit from the boundary  $x = a$  within time  $2\tau$ . Of course, they can interact with the other fronts present in  $u(\tau, \cdot)$ . In any case, the total strength of fronts in  $u(2\tau, \cdot)$  is still estimated as

$$(2.11) \quad \text{Tot.Var.}\{u(2\tau)\} = \mathcal{O}(1) \cdot \delta^2.$$

Next, to define  $u$  for  $t \in [2\tau, 3\tau]$ , consider the state  $v'''$  implicitly defined by

$$(2.12) \quad \begin{cases} u(2\tau, a+) = \Psi_n(\sigma_n) \circ \dots \circ \Psi_{p+1}(\sigma_{p+1})(v'''), \\ u^* = \Psi_p(\sigma_p) \circ \dots \circ \Psi_1(\sigma_1)(v'''). \end{cases}$$

On a forward neighborhood of the point  $(2\tau, a)$ , we let  $u$  coincide with (a front tracking approximation of) the solution to the Riemann problem

$$u(2\tau, x) = \begin{cases} u(2\tau, a+) & \text{if } x > a, \\ v''' & \text{if } x < a. \end{cases}$$

This procedure introduces at the point  $(2\tau, a)$  a family of wave-fronts of families  $i = p + 1, \dots, n$ , whose total strength is  $\mathcal{O}(1) \cdot (\rho + \delta)$ . Because of (2.4), all of these fronts will exit from the boundary  $x = b$  within time  $3\tau$ . Of course, they can interact with the other fronts present in  $u(2\tau, \cdot)$ . In any case, the total strength of fronts in  $u(3\tau, \cdot)$  is still estimated as

$$(2.13) \quad \text{Tot.Var.}\{u(3\tau)\} = \mathcal{O}(1) \cdot \delta^2.$$

Moreover, the difference between the values  $u(3\tau, x)$  and  $u^*$  will be of the same order of the total strength of waves in  $u(\tau, \cdot)$  so that the first inequality in (2.9) will also hold.  $\square$

*Proof of Theorem 1.* Using the same arguments as in the proof of Lemma 1, for every  $\varepsilon > 0$ , we can construct an  $\varepsilon$ -approximate front tracking solution  $u = u(t, x)$  on  $[0, 2N\tau] \times [a, b]$  such that

$$(2.14) \quad \sup_{x \in [a, b]} |u(2N\tau, x) - u^*| = \mathcal{O}(1) \cdot \delta, \quad \text{Tot.Var.}\{u(2N\tau)\} = \mathcal{O}(1) \cdot \delta.$$

Choosing  $\delta > 0$  sufficiently small, we can assume that, in (2.14),  $\mathcal{O}(1) \cdot \delta < \delta_0 < 1/C$ , the constant in Lemma 2. Calling  $T \doteq 2N\tau$ , we can now repeat the construction described in Lemma 2 on each interval  $[T + 3k\tau, T + 3(k + 1)\tau]$ . This yields

$$(2.15) \quad \sup_{x \in [a, b]} |u(T + 3k\tau, x) - u^*| \leq \delta_k, \quad \text{Tot.Var.}\{u(T + 3k\tau)\} \leq \delta_k,$$

where the constants  $\delta_k$  satisfy the inductive relations

$$(2.16) \quad \delta_{k+1} \leq C\delta_k^2.$$

Choosing a sequence of  $\varepsilon$ -approximate front tracking solutions  $u_\varepsilon$  satisfying (2.15)–(2.16) and taking the limit as  $\varepsilon \rightarrow 0$ , we obtain an entropy weak solution  $u$  which still satisfies the same estimates. The bounds (1.7)–(1.8) are now a consequence of (2.15)–(2.16), with a suitable choice of the constants  $C_0, \kappa$ .  $\square$



**3. Decay of positive waves.** Throughout the following, we consider a  $2 \times 2$  system of conservation laws

$$(3.1) \quad u_t + f(u)_x = 0,$$

satisfying the assumptions (H). Following [6, p. 128], we construct a set of Riemann coordinates  $(w_1, w_2)$ . One can then choose the right eigenvectors of  $Df(u)$  so that

$$(3.2) \quad r_i(u) = \frac{\partial u}{\partial w_i}, \quad \frac{\partial \lambda_i}{\partial w_i} = D\lambda_i \cdot r_i > 0, \quad i = 1, 2.$$

It will be convenient to perform most of the analysis on a special class of solutions: piecewise Lipschitz functions with finitely many shocks and no compression waves. Due to the geometric structure of the system, this set of functions turns out to be positively invariant for the flow generated by the hyperbolic system. We first derive several a priori estimates concerning these solutions, in particular on the strength and location of the shocks. We then observe that any *BV* solution can be obtained as a limit of a sequence of piecewise Lipschitz solutions in our special class. Our estimates can thus be extended to general *BV* solutions.

DEFINITION 1. We call  $\mathcal{U}$  the set of all piecewise Lipschitz functions  $u : \mathbb{R} \mapsto \mathbb{R}^2$  with finitely many jumps such that

- (i) at every jump, the corresponding Riemann problem is solved only in terms of shocks (no centered rarefactions);
- (ii) no compression waves are present; i.e.,  $w_{i,x}(x) \geq 0$  at almost every  $x \in \mathbb{R}$ ,  $i = 1, 2$ .

The next lemma establishes the forward invariance of the set  $\mathcal{U}$ .

LEMMA 3. Consider the  $2 \times 2$  system of conservation laws (3.1) satisfying the assumptions (H). Let  $u = u(t, x) >$  be the solution to a Cauchy problem, with small total variation, satisfying  $u(0, \cdot) \in \mathcal{U}$ . Then

$$(3.3) \quad u(t, \cdot) \in \mathcal{U} \quad \text{for all } t \geq 0.$$

*Proof.* We have to show that, as time progresses, the total number of shocks does not increase and no compression wave is ever formed. This will be the case provided that the following hold:

- (i) The interaction of two shocks of the same family produces an outgoing shock in the other family.
- (ii) The interaction of a shock with an infinitesimal rarefaction wave of the same family produces a rarefaction wave in the other family.

Both of the above conditions can be easily checked by analyzing the relative positions of shocks and rarefaction curves. We will do this for the first family, leaving the verification of the other case to the reader.

Call  $\sigma \mapsto R_1(\sigma)$  the rarefaction curve through a state  $u_0$ , parametrized so that

$$\lambda_1(R_1(\sigma)) = \lambda_1(u_0) + \sigma.$$

It is well known that the shock curve through  $u_0$  has a second order tangency with this rarefaction curve. Hence there exists a smooth function  $c_1(\sigma)$  such that the point

$$S_1(\sigma) \doteq R_1(\sigma) + c_1(\sigma) \frac{\sigma^3}{6} r_2(u_0)$$

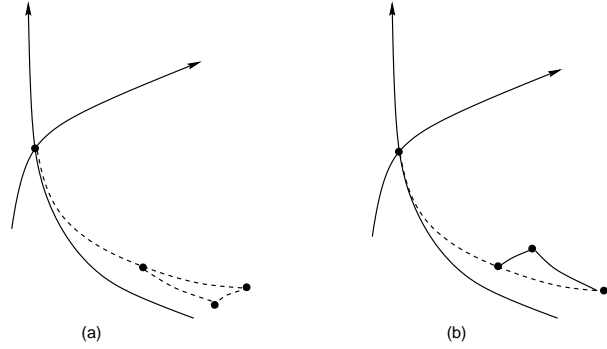


FIG. 4.

lies on this shock curve for all  $\sigma$  in a neighborhood of zero. From the Rankine-Hugoniot equations, it now follows that

$$\chi(\sigma) \doteq (f(R_1(\sigma) + c_1(\sigma)(\sigma^3/6)r_2(u_0)) - f(u_0)) \wedge (R_1(\sigma) + c_1(\sigma)(\sigma^3/6)r_2(u_0) - u_0) = 0. \tag{3.4}$$

Differentiating the wedge product (3.4) four times at  $\sigma = 0$  and denoting derivatives with upper dots, we obtain

$$\begin{aligned} \frac{d^4 \chi}{d\sigma^4}(0) &= 4[\lambda_1(u_0) \ddot{R}_1(0) + 2\dot{R}_1(0) + \lambda_2(u_0) c_1(0)r_2(u_0)] \wedge \dot{R}_1(0) \\ &\quad + 6[\lambda_1(u_0)\ddot{R}_1(0) + \dot{R}_1(0)] \wedge \dot{R}_1(0) + 4\lambda_1(u_0)\dot{R}_1(0) \wedge [\ddot{R}_1(0) + c(0)r_2(u_0)] \\ &= 4(\lambda_2(u_0) - \lambda_1(u_0))c_1(0)r_2(u_0) \wedge r_1(u_0) + 2(Dr_1 \cdot r_1)(u_0) \wedge r_1(u_0) \\ &= 0. \end{aligned}$$

Hence

$$c_1(0) = \frac{(Dr_1 \cdot r_1) \wedge r_1}{2(\lambda_2 - \lambda_1)(r_1 \wedge r_2)} < 0. \tag{3.5}$$

By (3.5), the relative position of 1-shock and 1-rarefaction curves is as depicted in Figure 1. By the geometry of wave curves, the properties (i) and (ii) are now clear. Figure 4a illustrates the interaction of two 1-shocks, while Figure 4b shows the interaction between a 1-shock and a 1-rarefaction. By  $u_l, u_m, u_r$  we denote the left, middle, and right states before the interaction, while  $u'_m$  is the middle state after the interaction. In the two cases, the solution of the Riemann problem contains a 2-shock and a 2-rarefaction, respectively.  $\square$

The next lemma shows the decay of positive waves for solutions with small total variation, taking values inside  $\mathcal{U}$ .

LEMMA 4. *Let  $u = u(t, x)$  be a solution of the Cauchy problem for the  $2 \times 2$  system (3.1) satisfying (H). Assume that*

$$u(t, \cdot) \in \mathcal{U}, \quad t \geq 0. \tag{3.6}$$

*Then there exist  $\kappa, \delta > 0$  such that, if  $\text{Tot.Var.}(u(t, \cdot)) < \delta$  for all  $t$ , then its Riemann coordinates  $(w_1, w_2)$  satisfy*

$$0 \leq w_{i,x}(t, x) \leq \frac{\kappa}{t}, \quad t > 0, \quad i = 1, 2. \tag{3.7}$$

*Proof.* We consider the case  $i = 1$ . Fix any point  $(\bar{t}, \bar{x})$ . Since centered rarefaction waves are not present, there exists a unique 1-characteristic through this point, which we denote as  $t \mapsto x_1(t; \bar{t}, \bar{x})$ . It is the solution of the Cauchy problem

$$(3.8) \quad \dot{x}(t) = \lambda_1(u(t, x(t))), \quad x(\bar{t}) = \bar{x}.$$

The evolution of  $w_{1,x}$  along this characteristic is described by

$$\frac{d}{dt}w_{1,x}(t, x_1(t)) = w_{1,xt} + \lambda_1 w_{1,xx} = -(\lambda_1 w_{1,x})_x + \lambda_1 w_{1,xx} = -\frac{\partial \lambda_1}{\partial w_1} w_{1,x}^2 - \frac{\partial \lambda_1}{\partial w_2} w_{1,x} w_{2,x}.$$

Since the system is genuinely nonlinear, there exists  $k_1 > 0$  such that  $\partial \lambda_1 / \partial w_1 \geq k_1 > 0$ , and hence

$$(3.9) \quad \frac{d}{dt}w_{1,x}(t, x_1(t)) \leq -k_1 w_{1,x}^2 + \mathcal{O}(1) \cdot w_{1,x} w_{2,x}.$$

Moreover, at each time  $t_\alpha$  where the characteristic crosses a 2-shock of strength  $|\sigma_\alpha|$ , we have the estimate

$$(3.10) \quad w_{1,x}(t_\alpha+) \leq (1 + \mathcal{O}(1) \cdot |\sigma_\alpha|)w_{1,x}(t_\alpha-).$$

Let  $Q(t)$  be the total interaction potential at time  $t$  (see, for example, [4, p. 202]), and let  $V_2(t)$  be the total amount of 2-waves approaching our 1-wave located at  $x_1(t)$ . Repeating the arguments in [4, p. 139], we can find a constant  $C_0 > 0$  such that the quantity

$$\Upsilon(t) \doteq V_1(t) + C_0 Q(t), \quad t > 0,$$

is nonincreasing. Moreover, for almost every  $t$ , one has

$$\dot{\Upsilon}(t) \leq -|\lambda_2 - \lambda_1| |w_{2,x}|(t, x_1(t)),$$

while, at times  $t_\alpha$ , where  $x_1$  crosses a 2-shock of strength  $|\sigma_\alpha|$ , there holds

$$\Upsilon(t_\alpha-) \leq \Upsilon(t_\alpha+) - |\sigma_\alpha|.$$

Call  $W(t) \doteq w_{1,x}(t, x_1(t))$ . By the previous estimates, from (3.9) and (3.10), it follows that

$$(3.11) \quad \begin{aligned} \dot{W}(t) &\leq -k_1 W^2(t) - C \dot{\Upsilon}(t) W(t), \\ W(t_\alpha+) - W(t_\alpha-) &\leq C [\Upsilon(t_\alpha+) - \Upsilon(t_\alpha-)] W(t_\alpha-) \end{aligned}$$

for a suitable constant  $C$ . We now observe that

$$y(t) \doteq \frac{e^{-C\Upsilon(t)}}{\int_0^t k_1 e^{-C\Upsilon(s)} ds}$$

is a distributional solution of the equation

$$\dot{y} = -k_1 y^2 - C \dot{\Upsilon}(t) y,$$

with  $y(t) \rightarrow \infty$  as  $t \rightarrow 0+$ . A comparison argument now yields  $W(t) \leq y(t)$ . Since  $\Upsilon$  is positive and decreasing, we have

$$W(t) \leq \frac{1}{k_1} \frac{1}{\int_0^t e^{-C\Upsilon(s)} ds} \leq \frac{e^{C\Upsilon(0)}}{k_1 t}$$

for all  $t > 0$ . This establishes (3.7) for  $i = 1$ , with  $\kappa \doteq e^{CT(0)}/k_1$ . The case  $i = 2$  is identical.  $\square$

We conclude this section by proving a decay estimate for positive waves, valid for general BV solutions of the system (3.1). For this purpose, we need to recall some definitions introduced in [5]. See also [4, p. 201].

Let  $u : \mathbb{R} \mapsto \mathbb{R}^2$  have bounded variation. By possibly changing the values of  $u$  at countably many points, we can assume that  $u$  is right continuous. The distributional derivative  $\mu \doteq D_x u$  is a vector measure, which can be decomposed into a continuous and an atomic part:  $\mu = \mu_c + \mu_a$ . For  $i = 1, 2$ , the scalar measures  $\mu^i = \mu_c^i + \mu_a^i$  are defined as follows. The continuous part of  $\mu^i$  is the Radon measure  $\mu_c^i$  such that

$$(3.12) \quad \int \phi \, d\mu_c^i = \int \phi l_i(u) \cdot d\mu_c$$

for every scalar continuous function  $\phi$  with compact support. The atomic part of  $\mu^i$  is the measure  $\mu_a^i$  concentrated on the countable set  $\{x_\alpha; \alpha = 1, 2, \dots\}$ , where  $u$  has a jump, such that

$$(3.13) \quad \mu_a^i(\{x_\alpha\}) = \sigma_{\alpha,i} \doteq E_i(u(x_\alpha-), u(x_\alpha+))$$

is the size of the  $i$ th wave in the solution of the corresponding Riemann problem with data  $u(x_\alpha \pm)$ . We regard  $\mu^i$  as the *measure of  $i$ -waves* in the solution  $u$ . It can be decomposed in a positive and a negative part so that

$$(3.14) \quad \mu^i = \mu^{i+} - \mu^{i-}, \quad |\mu^i| = \mu^{i+} + \mu^{i-}.$$

The decay estimate in (3.7) can now be extended to general BV solutions. Indeed, we show that the density of positive  $i$ -waves decays as  $\kappa/t$ . By  $\text{meas}(J)$  we denote here the Lebesgue measure of a set  $J$ .

LEMMA 5. *Let  $u = u(t, x)$  be a solution of the Cauchy problem for the  $2 \times 2$  system (3.1) satisfying (H). Then there exist  $\kappa, \delta > 0$  such that, if  $\text{Tot.Var.}(u(t, \cdot)) < \delta$  for all  $t$ , then the measures  $\mu_t^{1+}, \mu_t^{2+}$  of positive waves in  $u(t, \cdot)$  satisfy*

$$(3.15) \quad \mu_t^{i+}(J) \leq \frac{\kappa}{t} \text{meas}(J)$$

for every Borel set  $J \subset \mathbb{R}$  and every  $t > 0, i = 1, 2$ .

*Proof.* For every BV solution  $u$  of (3.1), we can construct a sequence of solutions  $u_\nu$  with  $u_\nu \rightarrow u$  as  $\nu \rightarrow \infty$  and such that  $u_\nu(t, \cdot) \in \mathcal{U}$  for all  $t$ . Calling  $(w_1^\nu, w_2^\nu)$  the Riemann coordinates of  $u_\nu$ , by Lemma 4 we have

$$(3.16) \quad 0 \leq w_{i,x}^\nu(t, x) \leq \frac{\kappa}{t}, \quad t > 0, \quad i = 1, 2, \quad \nu \geq 1.$$

For a fixed  $t > 0$ , observe that the map  $x \mapsto w_1^\nu(t, x)$  has upward jumps precisely at the points  $x_\alpha$  where  $u(t, \cdot)$  has a 2-shock. Define  $\tilde{\mu}_\nu$  as the positive, purely atomic measure, concentrated on the finitely many points  $x_\alpha$  where  $u(t, \cdot)$  has a 2-shock, such that

$$(3.17) \quad \tilde{\mu}_\nu(\{x_\alpha\}) = w_1^\nu(t, x_\alpha+) - w_1^\nu(t, x_\alpha-) \leq C |\sigma_\alpha|^3$$

for some constant  $C$ . By possibly taking a subsequence, we can assume the existence of a weak limit  $\tilde{\mu}_\nu \rightharpoonup \tilde{\mu}$ . Because of the estimate in (3.17), the measure  $\tilde{\mu}$  is purely

atomic and is concentrated on the set of points  $x_\beta$ , which are limits as  $\nu \rightarrow \infty$  of a sequence of points  $x_\alpha^\nu$ , where  $u_\nu(t, \cdot)$  has a 2-shock of uniformly positive strength  $|\sigma_\nu| \geq \delta > 0$ . Therefore,  $\tilde{\mu}$  is concentrated on the set of points where the limit solution  $u(t, \cdot)$  has a 2-shock and makes no contribution to the positive part of  $\mu_t^{1+}$ . We thus conclude that the positive part of  $\mu_t^{1+}$  is absolutely continuous with respect to Lebesgue measure, with density  $\leq \kappa/t$ . An analogous argument holds for  $\mu_t^{2+}$ .  $\square$

**COROLLARY 1.** *Let  $u = u(t, x)$  be a solution of the  $2 \times 2$  system (1.1). Let the assumptions (H) hold. Fix  $\varepsilon > 0$ , and consider the subinterval  $[a', b'] \doteq [a + \varepsilon, b - \varepsilon]$ . Assume that, at time  $t = 0$ , the measures  $\mu^{1+}$ ,  $\mu^{2+}$  of positive waves in  $u(0, \cdot)$  on  $[a, b]$  vanish identically. Then, for every  $t > 0$ , one has*

$$(3.18) \quad \mu_t^{i+}(J) \leq \frac{\kappa \lambda^*}{\varepsilon} \text{meas}(J)$$

for every Borel set  $J \subset [a', b']$  and every  $t > 0$ ,  $i = 1, 2$ .

Indeed, recalling (1.9), the values of  $u(t, \cdot)$  restricted to the interval  $[a', b']$  can be obtained by solving a Cauchy problem, with initial data assigned on the whole interval  $[a, b]$  at time  $t - \varepsilon/\lambda^*$ .

**4. Proof of Theorem 2.**

**LEMMA 6.** *In the same setting as Lemma 4, assume that there exists  $\kappa' > 0$  such that*

$$(4.1) \quad 0 \leq w_{i,x}(t, x) \leq \kappa', \quad t \in [0, T], \quad i = 1, 2.$$

Let  $t \mapsto x(t)$  be the location of a shock, with strength  $|\sigma(t)|$ . There exists a constant  $0 < c < 1$  such that

$$(4.2) \quad |\sigma(t)| \geq c|\sigma(s)|, \quad 0 \leq s < t \leq T.$$

*Proof.* To fix the ideas, let  $u(t, \cdot)$  have a 1-shock located at  $x(t)$ , with strength  $|\sigma(t)|$ . Outside points of interaction with other shocks, the strength satisfies an inequality of the form

$$(4.3) \quad \frac{d}{dt} |\sigma(t)| \geq -C \cdot (w_{1,x}(t, x(t)+) + w_{1,x}(t, x(t)-) - w_{2,x}(t, x(t)+) - w_{2,x}(t, x(t)-)) |\sigma(t)|.$$

At times where our 1-shock interacts with other 1-shocks, its strength increases. Moreover, at each time  $t_\alpha$  where our 1-shock interacts with a 2-shock, say, of strength  $|\sigma_\alpha|$ , one has

$$(4.4) \quad |\sigma(t_\alpha+)| \geq |\sigma(t_\alpha-)| (1 - C' |\sigma_\alpha|)$$

for some constant  $C'$ . Assuming that the total variation remains small, the total number of 2-shocks which cross any given 1-shock is uniformly small. Hence (4.3)–(4.4) together imply (4.2).  $\square$

**LEMMA 7.** *Let  $t \mapsto u(t, \cdot) \in \mathcal{U}$  be a solution of the Cauchy problem for a genuinely nonlinear  $2 \times 2$  system satisfying (1.11). Assume that there exists  $\kappa' > 0$  such that*

$$(4.5) \quad w_{i,x}(t, x) \leq \kappa', \quad t \in [0, T], \quad i = 1, 2.$$

Since no centered rarefactions are present, any two  $i$ -characteristics, say,  $x(t) < y(t)$ , can uniquely be traced backward up to time  $t = 0$ . There exists a constant  $L > 0$  such that

$$(4.6) \quad y(t) - x(t) \leq L(y(s) - x(s)), \quad 0 \leq s < t \leq T.$$

*Proof.* Consider the case when  $i = 2$ . By definition, the characteristics are solutions of

$$\dot{x}(t) = \lambda_2(u(t, x(t))), \quad \dot{y}(t) = \lambda_2(u(t, y(t))).$$

Since the characteristic speed  $\lambda_2$  decreases across 2-shocks, we can write

$$(4.7) \quad \dot{y}(t) - \dot{x}(t) \leq C \int_{x(t)}^{y(t)} |w_{1,x}(t, \xi)| + |w_{2,x}(t, \xi)| d\xi + C \sum_{\alpha \in \mathcal{S}_1[x,y]} |\sigma_\alpha(t)|,$$

where  $\mathcal{S}_1[x, y]$  denotes the set of all 1-shocks located inside the interval  $[x(t), y(t)]$ . Introduce the function

$$\phi(t, x) \doteq \begin{cases} 0 & \text{if } x \leq x(t), \\ \frac{x-x(t)}{y(t)-x(t)} & \text{if } x(t) < x < y(t), \\ 1 & \text{if } x \geq y(t). \end{cases}$$

Moreover, define the functional

$$\Phi(t) \doteq \sum_{\alpha \in \mathcal{S}_1} \phi(t, x_\alpha(t)) |\sigma_\alpha(t)| + C_0 Q(t),$$

where the summation now refers to all 1-shocks in  $u(t, \cdot)$  and  $Q$  is the usual interaction potential. Observe that the map  $t \mapsto \Phi(t)$  is nonincreasing. By (4.5) and (4.7), we can now write

$$\dot{y}(t) - \dot{x}(t) \leq C'(1 - \dot{\Phi}(t))(y(t) - x(t))$$

for some constant  $C'$ . This implies (4.6) with  $L = \exp\{C'T + C'\Phi(0)\}$ .  $\square$

The next result is the key ingredient toward the proof of Theorem 2. It provides the density of the set of interaction points where new shocks are generated.

LEMMA 8. *Fix  $\varepsilon > 0$ , and define  $a'' = a + 2\varepsilon$ ,  $b'' = b - 2\varepsilon$ . Consider a  $2 \times 2$  system of the form (1.1), satisfying (H). Let  $u$  be an entropy weak solution defined on  $[0, \tau] \times [a, b]$ , with  $\tau \doteq \varepsilon/4\lambda^*$ . Let (3.18) hold for all  $t \in [0, \tau]$ , and assume that  $u(0, \cdot)$  has a dense set of 1-shocks on the interval  $[a'', b'']$ . Then, for  $0 \leq t \leq \tau$ , the solution  $u(t, \cdot)$  has a set of 1-shocks which is dense on  $[a'', b' - \lambda^*t]$  and a set of 2-shocks which is dense on  $[a'', b'']$ .*

*Proof.* By the assumptions of the lemma, there exists a sequence of piecewise Lipschitz solutions  $t \mapsto u_\nu(t) \in \mathcal{U}$  such that  $u_\nu \rightarrow u$  in  $\mathbf{L}^1$ ,

$$0 \leq w_{i,x}^\nu(t, x) \leq \frac{2\kappa\lambda^*}{\varepsilon}, \quad i = 1, 2, \quad \nu \geq 1,$$

and, moreover, the following holds. For every  $\rho > 0$ , there exists  $\delta > 0$  such that each  $u_\nu(0, \cdot)$  (with  $\nu$  large enough) contains at least one 1-shock of strength  $|\sigma_\nu(0)| \geq \delta$  on every subinterval  $J \subset [a'', b'']$  having length  $\geq \rho$ .

To prove the first statement in Lemma 8, fix  $t \in [0, \tau]$ , and consider any nontrivial interval  $[p, q] \subseteq [a'', b'' - t\lambda^*]$ . Call  $s \mapsto p_\nu(s)$ ,  $s \mapsto q_\nu(s)$  the backward characteristics through these points, relative to the solution  $u_\nu$ . We thus have

$$\begin{cases} \dot{p}_\nu(s) = \lambda_1(u_\nu(s, p_\nu(s))), & \begin{cases} p_\nu(t) = p, \\ q_\nu(t) = q. \end{cases} \\ \dot{q}_\nu(s) = \lambda_1(u_\nu(s, q_\nu(s))), \end{cases}$$

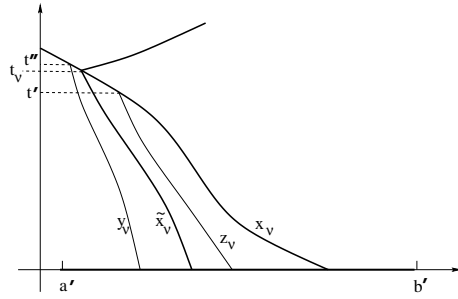


FIG. 5.

By Lemma 7,  $q_\nu(0) - p_\nu(0) \geq \rho$  for some  $\rho > 0$  independent of  $\nu$ . Hence, each solution  $u_\nu$  contains a shock of strength  $|\sigma_\nu(s)| \geq \delta$  located inside the interval  $[p_\nu(0), q_\nu(0)]$ . Lemma 5 now yields  $|\sigma_\nu(t)| \geq c\delta$ . By possibly taking a subsequence, we conclude that the limit solution  $u(t, \cdot)$  contains a 1-shock of positive strength at the point  $x(t) = \lim x_\nu(t) \in [p, q]$ .

To prove the second statement, we will show that the set of points where two 1-shocks in  $u$  interact and produce a new 2-shock is dense on the triangle

$$\Delta \doteq \{(t, x); t \in [0, \tau], a'' < x < b'' - \lambda^*t\}.$$

Indeed, let  $t \in [0, \tau]$  and  $p < q$  be as before. For each  $\nu$  sufficiently large, let  $t \mapsto x_\nu(t)$  be the location of a 1-shock in  $u_\nu$ , with strength  $|\sigma_\nu(t)| \geq \delta > 0$ . Assume  $x_\nu(\cdot) \rightarrow x(\cdot)$  as  $\nu \rightarrow \infty$ , and  $x_\nu(t) \in [p, q]$ , so that  $x(t)$  is the location of a 1-shock of the limit solution  $u$ , say, with strength  $|\sigma(t)| > 0$ .

We claim that the set of times  $\hat{t}$  where some other 1-shock  $\sigma'$  impinges on  $\sigma$  and generates a new 2-shock is dense on  $[0, t]$ . To see this, fix  $0 < t' < t'' < t$ . For each  $\nu$  sufficiently large, consider the backward 1-characteristics  $y_\nu, z_\nu$  impinging from the left on the shock  $x_\nu$  at times  $t'', t'$ , respectively (see Figure 5). These provide solutions to the Cauchy problems

$$\begin{aligned} \dot{y}_\nu(t) &= \lambda_1(u_\nu(t, y_\nu(t))), & y_\nu(t'') &= x_\nu(t''), \\ \dot{z}_\nu(t) &= \lambda_1(u_\nu(t, z_\nu(t))), & z_\nu(t') &= x_\nu(t'), \end{aligned}$$

respectively. Observe that

$$z_\nu(0) - y_\nu(0) \geq \rho$$

for some  $\rho > 0$  independent of  $\nu$ . Indeed, the genuine nonlinearity of the system implies

$$\lambda_1(u_\nu(t, x_\nu(t)-)) - \dot{x}_\nu(t) \geq \kappa |u_\nu(t, x_\nu(t)+) - u_\nu(t, x_\nu(t)-)| \geq \kappa\delta.$$

Therefore,

$$x_\nu(t') - y_\nu(t') \geq \rho' > 0$$

for some constant  $\rho' > 0$  independent of  $\nu$ . By Lemma 6, the interval  $[y_\nu(0), z_\nu(0)]$  has uniformly positive length. Hence it contains a 1-shock of  $u_\nu(0, \cdot)$  with uniformly

positive strength  $|\sigma_\nu(0)| \geq \delta > 0$ . By Lemma 5, every  $u_\nu$  has a 1-shock with strength  $|\sigma_\nu(t)| \geq c\delta$  located along some curve  $t \mapsto \tilde{x}_\nu(t)$  with

$$y_\nu(t) < \tilde{x}_\nu(t) < z_\nu(t), \quad t \in [0, t'].$$

Clearly, this second 1-shock impinges on the shock  $x_\nu$  at some time  $t_\nu \in [t', t'']$ , creating a new 2-shock with uniformly large strength. Letting  $\nu \rightarrow \infty$ , we obtain the result.  $\square$

*Proof of Theorem 2.* Let  $\delta_0 > 0$  be given. We can then construct an initial condition  $u(0, \cdot) = \phi$ , with  $\text{Tot.Var.}\{\phi\} < \delta_0$ , having a dense set of 1-shocks on the interval  $[a, b]$  and no other waves. As a consequence, for any  $\varepsilon > 0$ , by Corollary 1, we have the estimate (3.18) on the density of positive waves away from the boundary.

Fix  $\tau = \varepsilon/4\lambda^*$ , and consider again the subinterval  $[a'', b''] = [a + 2\varepsilon, b - 2\varepsilon]$ . We can apply Lemma 8 first on the time interval  $[0, \tau]$ , obtaining the density of 2-shocks on the region  $[0, \tau] \times [a'', b'']$ . Then, by induction on  $m$ , the same argument is repeated on each time interval  $t \in [m\tau, (m+1)\tau]$ , proving the theorem.  $\square$

**Acknowledgment.** The second author warmly thanks professor Benedetto Piccoli for stimulating conversations.

#### REFERENCES

- [1] D. AMADORI, *Initial-boundary value problems for nonlinear systems of conservation laws*, NoDEA Differential Equations Appl., 4 (1997), pp. 1–42.
- [2] D. AMADORI AND R. M. COLOMBO, *Continuous dependence for  $2 \times 2$  conservation laws with boundary*, J. Differential Equations, 138 (1997), pp. 229–266.
- [3] F. ANCONA AND A. MARSON, *On the attainable set for scalar nonlinear conservation laws with boundary control*, SIAM J. Control Optim., 36 (1998), pp. 290–312.
- [4] A. BRESSAN, *Hyperbolic Systems of Conservation Laws. The One Dimensional Cauchy Problem*, Oxford University Press, Oxford, UK, 2000.
- [5] A. BRESSAN AND R. M. COLOMBO, *Decay of positive waves in nonlinear systems of conservation laws*, Ann. Scuola Norm. Sup. Pisa Cl. Sci. (4), 26 (1998), pp. 133–160.
- [6] C. M. DAFERMOS, *Hyperbolic Conservation Laws in Continuum Physics*, Springer-Verlag, New York, 2000.
- [7] R. DIPERNA, *Global solutions to a class of nonlinear hyperbolic systems of equations*, Comm. Pure Appl. Math., 26 (1973), pp. 1–28.
- [8] P. LAX, *Hyperbolic systems of conservation laws II*, Comm. Pure Appl. Math., 10 (1957), pp. 537–566.
- [9] T. LI AND B. RAO, *Exact Boundary Controllability for Quasilinear Hyperbolic Systems*, to appear.
- [10] T. LI AND J. YI, *Semi-global  $C^1$  solution to the mixed initial-boundary value problem for quasilinear hyperbolic systems*, Chinese Ann. Math. Ser. B, 21 (2000), pp. 165–186.
- [11] T. LI AND W. YU, *Boundary Value Problems for Quasilinear Hyperbolic Systems*, Duke University Mathematics Series V, Mathematics Department, Duke University, Durham, NC, 1985.