

# A Stochastic Model of Optimal Debt Management and Bankruptcy

Alberto Bressan<sup>(\*)</sup>, Antonio Marigonda<sup>(\*\*)</sup>, Khai T. Nguyen<sup>(\*\*\*)</sup>, and Michele Palladino<sup>(\*)</sup>

(\*) Department of Mathematics, Penn State University  
University Park, PA 16802, USA.

(\*\*) Dipartimento di Informatica, Università di Verona, Italy

(\*\*\*) Department of Mathematics, North Carolina State University, USA  
Raleigh, NC 27695, USA.

e-mails: bressan@math.psu.edu, antonio.marigonda@univr.it,  
tnguye13@ncsu.edu, mup26@psu.edu

September 19, 2016

## Abstract

A problem of optimal debt management is modeled as a noncooperative game between a borrower and a pool of lenders, in infinite time horizon with exponential discount. The yearly income of the borrower is governed by a stochastic process. When the debt-to-income ratio  $x(t)$  reaches a given size  $x^*$ , bankruptcy instantly occurs. The interest rate charged by the risk-neutral lenders is precisely determined in order to compensate for this possible loss of their investment.

For a given bankruptcy threshold  $x^*$ , existence and properties of optimal feedback strategies for the borrower are studied, in a stochastic framework as well as in a limit deterministic setting. The paper also analyzes how the expected total cost to the borrower changes, depending on different values of  $x^*$ .

## 1 Introduction

We consider a problem of optimal debt management in infinite time horizon, modeled as a noncooperative game between a borrower and a pool of risk-neutral lenders. Since the debtor may go bankrupt, lenders charge a higher interest rate to offset the possible loss of part of their investment.

In the models studied in [7, 8], the borrower has a fixed income, but large values of the debt determine a bankruptcy risk. Namely, if at a given time  $t$  the debt-to-income ratio  $x(t)$  is too big, there is a positive probability that panic spreads among investors and bankruptcy occurs within a short interval  $[t, t + \varepsilon]$ . This event is similar to a bank run. Calling  $T_B$  the random bankruptcy time, this means

$$\text{Prob}\left\{T_B \in [t, t + \varepsilon] \mid T_B > t\right\} = \rho(x(t)) \cdot \varepsilon + o(\varepsilon).$$

Here the “instantaneous bankruptcy risk”  $\rho(\cdot)$  is a given, nondecreasing function.

At all times  $t$ , the borrower must allocate a portion  $u(t) \in [0, 1]$  of his income to service the debt, i.e., paying back the principal together with the running interest. Our analysis will be mainly focused on the existence and properties of an optimal repayment strategy  $u = u^*(x)$  in feedback form.

In the alternative model proposed by Nuño and Thomas in [13], the yearly income  $Y(t)$  is modeled as a stochastic process:

$$dY(t) = \mu Y(t) dt + \sigma Y(t) dW. \quad (1.1)$$

Here  $\mu \geq 0$  is an exponential growth rate, while  $W$  denotes Brownian motion on a filtered probability space. Differently from [7, 8], in [13] it is the borrower himself that chooses when to declare bankruptcy. This decision will be taken when the debt-to-income ratio reaches a certain threshold  $x^*$ , beyond which the burden of servicing the debt becomes worse than the cost of bankruptcy.

At the time  $T_b$  when bankruptcy occurs, we assume that the borrower pays a fixed price  $B$ , while lenders recover a fraction  $\theta(x(T_b)) \in [0, 1]$  of their outstanding capital. Here  $x \mapsto \theta(x)$  is a nondecreasing function of the debt size. For example, the borrower may hold an amount  $R_0$  of collateral (gold reserves, real estate...) which will be proportionally divided among creditors if bankruptcy occurs. In this case, when bankruptcy occurs each investor will receive a fraction

$$\theta(x(T_b)) = \max \left\{ \frac{R_0}{x(T_b)}, 1 \right\} \quad (1.2)$$

of his outstanding capital.

Aim of the present paper is to provide a detailed mathematical analysis of some models closely related to [13]. We stress that these problems are very different from a standard problem of optimal control. Indeed, the interest rate charged by lenders is not given a priori. Rather, it is determined by the expected evolution of the debt at all future times. Hence it depends globally on the entire feedback control  $u(\cdot)$ . A “solution” must be understood as a Nash equilibrium, where the strategy implemented by the borrower represents the best reply to the strategy adopted by the lenders, and conversely.

Our main results can be summarized as follows.

- We first assume that value  $x^*$  at which bankruptcy occurs is a priori given, and seek an optimal feedback control  $u = u^*(x)$  which minimizes the expected cost to the borrower. For any value  $\sigma \geq 0$  of the diffusion coefficient in (1.1), we prove that the problem admits at least one Nash equilibrium solution, in feedback form. In the deterministic case where  $\sigma = 0$ , the solution can be constructed by concatenating solutions of a system of two ODEs, with terminal data given at  $x = x^*$ .
- We then study how the expected total cost of servicing the debt together with the bankruptcy cost (exponentially discounted in time), are affected by different choices of  $x^*$ .

Let  $\theta(x^*) \in [0, 1]$  be the salvage rate, i.e., the fraction of outstanding capital that will be paid back to lenders if bankruptcy occurs when the debt-to-income ratio is  $x^*$ . If

$$\lim_{s \rightarrow +\infty} \theta(s) s = +\infty, \quad (1.3)$$

then, letting  $x^* \rightarrow +\infty$ , the total expected cost to the borrower goes to zero. On the other hand, if

$$\lim_{s \rightarrow +\infty} \theta(s) s < +\infty, \quad (1.4)$$

then the total expected cost to the borrower remains uniformly positive as  $x^* \rightarrow +\infty$ .

We remark that the assumption (1.4) is quite realistic. For example, if (1.2) holds, then  $\theta(x^*) x^* = R_0$  for all  $x^*$  large enough. We remark that (1.4) rules out the possibility of a *Ponzi scheme*, where the old debt is serviced by initiating more and more new loans. Indeed, if (1.4) holds, then such a strategy will cause the total debt to blow up to infinity in finite time.

The remainder of the paper is organized as follows. In Section 2 we describe more carefully the model, deriving the equations satisfied by the value function  $V$  and the discounted bond price  $p$ . In Sections 3 and 4 we construct equilibrium solutions in feedback form, in the stochastic case ( $\sigma > 0$ ) and in the deterministic case ( $\sigma = 0$ ), respectively. Finally, Sections 5 and 6 contain an analysis of how the expected cost to the borrower changes, depending on the bankruptcy threshold  $x^*$ .

In the economics literature, some related models of debt and bankruptcy can be found in [1, 3, 7, 11, 12]. A general introduction to Nash equilibria and differential games can be found in [5, 6]. For the basic theory of optimal control and viscosity solutions of Hamilton-Jacobi equations we refer to [4, 9].

## 2 A model with stochastic growth

We consider a slight variant of the model in [13]. We denote by  $X(t)$  the total debt of a borrower (a government, or a private company) at time  $t$ . The annual income  $Y(t)$  of the borrower is assumed to be a random process, governed by the stochastic evolution equation (1.1).

The debt is financed by issuing bonds. When an investor buys a bond of unit nominal value, he receives a continuous stream of payments with intensity  $(r + \lambda)e^{-\lambda t}$ . Here

- $r$  is the interest rate paid on bonds, which we assume coincides with the discount rate,
- $\lambda$  is the rate at which the borrower pays back the principal.

If no bankruptcy occurs, the payoff for an investor will thus be

$$\int_0^\infty e^{-r} (r + \lambda) e^{-\lambda t} dt = 1.$$

In case of bankruptcy, a lender recovers only a fraction  $\theta \in [0, 1]$  of his outstanding capital. Here  $\theta$  can depend on the total amount of debt at the time on bankruptcy. To offset this

possible loss, the investor buys a bond with unit nominal value at a discounted price  $p \in [0, 1]$ . As in [8, 13], at any time  $t$  the value  $p(t)$  is uniquely determined by the competition of a pool of risk-neutral lenders.

We call  $U(t)$  the rate of payments that the borrower chooses to make to his creditors, at time  $t$ . If this amount is not enough to cover the running interest and pay back part of the principal, new bonds are issued, at the discounted price  $p(t)$ . The nominal value of the outstanding debt thus evolves according to

$$\dot{X}(t) = -\lambda X(t) + \frac{(\lambda + r)X(t) - U(t)}{p(t)}. \quad (2.1)$$

The debt-to-income ratio is defined as  $x = X/Y$ . In view of (1.1) and (2.1), Ito's formula [14, 15] yields the stochastic evolution equation

$$dx(t) = \left[ \left( \frac{\lambda + r}{p(t)} - \lambda + \sigma^2 - \mu \right) x(t) - \frac{u(t)}{p(t)} \right] dt - \sigma x(t) dW. \quad (2.2)$$

Here  $u = U/Y$  is the portion of the total income allocated to pay for the debt. Throughout the following we assume  $r > \mu$ . We observe that, if  $r < \mu$ , then the borrower's income grows faster than the debt (even if no payment is ever made). In this case, with probability one the debt-to-income ratio would approach zero as  $t \rightarrow +\infty$ .

In this model, the borrower has two controls. At each time  $t$  he can decide the portion  $u(t)$  of the total income which he allocates to repay the debt. Moreover, he can decide at what time  $T_b$  bankruptcy is declared. Throughout the following, we consider a control in feedback form, so that

$$u = u^*(x) \quad \text{for } x \in [0, x^*], \quad (2.3)$$

while bankruptcy is declared as soon as  $x(t)$  reaches the value  $x^*$ . The bankruptcy time is thus the random variable

$$T_b \doteq \inf\{t > 0; x(t) = x^*\}. \quad (2.4)$$

At first, we let  $x^*$  be a given upper bound to the size of the debt. In a later section, we shall regard  $x^*$  as an additional control parameter, chosen by the borrower in order to minimize his expected cost.

Given an initial size  $x_0$  of the debt, the total expected cost to the borrower, exponentially discounted in time, is thus computed as

$$J[x_0, u^*, x^*] = E \left[ \int_0^{T_b} e^{-rt} L(u^*(x(t))) dt + e^{-rT_b} B \right]_{x(0)=x_0}. \quad (2.5)$$

Here  $B$  is a large constant, accounting for the bankruptcy cost, while  $L(u)$  is the instantaneous cost for the borrower to implement the control  $u$ . In the following we shall assume

**(A)** *The cost function  $L$  is twice continuously differentiable for  $u \in [0, 1[$  and satisfies*

$$L(0) = 0, \quad L' > 0, \quad L'' > 0, \quad \lim_{u \rightarrow 1-} L(u) = +\infty. \quad (2.6)$$

For example, one may take

$$L(u) = c \ln \frac{1}{1-u}, \quad \text{or} \quad L(u) = \frac{cu}{(1-u)^\alpha},$$

for some  $c, \alpha > 0$ .

Fix  $x^* > 0$ . For a given initial debt  $x(0) = x_0 \in [0, x^*]$ , we define the corresponding value function as

$$V(x_0) = \inf_{u^*(\cdot)} J[x_0, u^*, x^*]. \quad (2.7)$$

Under the assumptions **(A)** we have

$$V(0) = 0, \quad V(x^*) = B. \quad (2.8)$$

Denote by

$$H(x, \xi, p) \doteq \min_{\omega \in [0,1]} \left\{ L(\omega) - \frac{\xi}{p} \omega \right\} + \left( \frac{\lambda + r}{p} - \lambda + \sigma^2 - \mu \right) x \xi \quad (2.9)$$

the Hamiltonian associated to the dynamics (2.2) and the cost function  $L$  in (2.5). Notice that, as long as  $p > 0$ , the function  $H$  is differentiable with Lipschitz continuous derivatives w.r.t. all arguments.

By a standard arguments, the value function  $V$  provides a solution to the second order ODE

$$rV(x) = H(x, V'(x), p(x)) + \frac{(\sigma x)^2}{2} V''(x), \quad (2.10)$$

with boundary conditions (2.8). As soon as the function  $V$  is determined, the optimal feedback control is recovered by

$$u^*(x) = \operatorname{argmin}_{\omega \in [0,1]} \left\{ L(\omega) - \frac{V'(x)}{p(x)} \omega \right\}.$$

By **(A)** this yields

$$u^*(x) = \begin{cases} 0 & \text{if } \frac{V'(x)}{p(x)} \leq L'(0), \\ (L')^{-1} \left( \frac{V'(x)}{p(x)} \right) & \text{if } \frac{V'(x)}{p(x)} > L'(0). \end{cases} \quad (2.11)$$

Assuming that lenders are risk-neutral, the discounted bond price  $p$  is determined by

$$p(x_0) = E \left[ \int_0^{T_b} (r + \lambda) e^{-(r+\lambda)t} dt + e^{-(r+\lambda)T_b} \theta(x^*) \right]_{x(0)=x_0}, \quad (2.12)$$

where  $\theta$  denotes the salvage rate. In other words, if bankruptcy occurs when the debt-to-income ratio is  $x^*$ , then investors receive a fraction  $\theta(x^*) \in [0, 1]$  of the nominal value of their holding. Notice that the random variable  $T_b$  in (2.4) now depends on the initial state  $x_0$ , the threshold  $x^*$ , and on the feedback control  $u^*(\cdot)$ .

By the Feynman-Kac formula,  $p(\cdot)$  satisfies the equation

$$(r + \lambda)(p(x) - 1) = \left[ \left( \frac{\lambda + r}{p(x)} - \lambda + \sigma^2 - \mu \right) x - \frac{u^*(x)}{p(x)} \right] \cdot p'(x) + \frac{(\sigma x)^2}{2} p''(x), \quad (2.13)$$

with boundary values

$$p(0) = 1, \quad p(x^*) = \theta(x^*). \quad (2.14)$$

Combining (2.10) and (2.13), we are thus led to the system of second order ODEs

$$\begin{cases} rV(x) & = H(x, V'(x), p(x)) + \frac{(\sigma x)^2}{2} \cdot V''(x), \\ (r + \lambda)(p(x) - 1) & = H_\xi(x, V'(x), p(x)) \cdot p'(x) + \frac{(\sigma x)^2}{2} \cdot p''(x), \end{cases} \quad (2.15)$$

with the boundary conditions

$$\begin{cases} V(0) = 0, & p(0) = 1, \\ V(x^*) = B, & p(x^*) = \theta(x^*). \end{cases} \quad (2.16)$$

We close this section by collecting some useful properties of the Hamiltonian function.

**Lemma 2.1.** *Let the assumptions **(A)** hold. Then, for all  $\xi \geq 0$  and  $p \in [0, 1]$ , the function  $H$  in (2.9) satisfies*

$$\left( \frac{(\lambda + r)x - 1}{p} + (\sigma^2 - \lambda - \mu)x \right) \xi \leq H(x, \xi, p) \leq \left( \frac{\lambda + r}{p} - \lambda + \sigma^2 - \mu \right) x \xi, \quad (2.17)$$

$$\frac{(\lambda + r)x - 1}{p} + (\sigma^2 - \lambda - \mu)x \leq H_\xi(x, \xi, p) \leq \left( \frac{\lambda + r}{p} - \lambda + \sigma^2 - \mu \right) x. \quad (2.18)$$

Moreover, for every  $x, p > 0$  the map  $\xi \mapsto H(x, \xi, p)$  is concave down and satisfies

$$H(x, 0, p) = 0, \quad (2.19)$$

$$H_\xi(x, 0, p) = \left( \frac{\lambda + r}{p} - \lambda + \sigma^2 - \mu \right) x, \quad (2.20)$$

$$\lim_{\xi \rightarrow +\infty} H(x, \xi, p) = \begin{cases} -\infty, & \text{if } \frac{1}{p} > \left( \frac{\lambda + r}{p} - \lambda + \sigma^2 - \mu \right) x, \\ +\infty, & \text{if } \frac{1}{p} \leq \left( \frac{\lambda + r}{p} - \lambda + \sigma^2 - \mu \right) x. \end{cases} \quad (2.21)$$

*Proof.*

1. Since  $H(x, \cdot, p)$  is defined as the infimum of a family of affine functions, it is concave down. We observe that (2.9) implies

$$H(x, \xi, p) = \left( \frac{\lambda + r}{p} - \lambda + \sigma^2 - \mu \right) x \xi \quad \text{if } 0 \leq \xi \leq pL'(0). \quad (2.22)$$

This yields the identities (2.19)-(2.20).

2. Taking  $\omega = 0$  in (2.9) we obtain the upper bound in (2.17). By the concavity property, the map  $\xi \mapsto H_\xi(x, \xi, p)$  is non-increasing. Hence (2.20) yields the upper bound in (2.18).

3. Since  $L(w) \geq 0$  for all  $w \in [0, 1]$ , we have

$$H(x, \xi, p) \geq \min_{w \in [0,1]} \left\{ -\frac{\xi}{p} w \right\} + \left( \frac{\lambda + r}{p} - \lambda + \sigma^2 - \mu \right) x \xi$$

and obtain the lower bound in (2.17). On the other hand, using the optimality condition, one computes from (2.9) that

$$H_\xi(x, \xi, p) = \frac{(\lambda + r)x - u^*(\xi, p)}{p} + (\sigma^2 - \lambda - \mu)x \quad (2.23)$$

where

$$u^*(\xi, p) = \operatorname{argmin}_{\omega \in [0,1]} \left\{ L(\omega) - \frac{\xi}{p} \omega \right\} = (L')^{-1} \left( \frac{\xi}{p} \right) < 1.$$

Observe that, as  $\xi \rightarrow +\infty$ , one has  $u^*(\xi, p) \rightarrow 1$  in (2.23). The non-increasing property of the map  $\xi \rightarrow H_\xi(x, \xi, p)$  yields the lower bound in (2.18).

4. To prove (2.21) we observe that, in the first case, there exists  $\omega_0 < 1$  such that

$$\frac{\omega_0}{p} > \left( \frac{\lambda + r}{p} - \lambda + \sigma^2 - \mu \right) x.$$

Hence, letting  $\xi \rightarrow +\infty$  we obtain

$$\lim_{\xi \rightarrow +\infty} H(x, \xi, p) \leq \lim_{\xi \rightarrow +\infty} \left[ L(\omega_0) - \frac{\omega_0}{p} \xi + \left( \frac{\lambda + r}{p} - \lambda + \sigma^2 - \mu \right) x \xi \right] = -\infty.$$

To handle the second case, we observe that, for  $\xi > 0$  large, the minimum in (2.9) is attained at the unique point  $\omega(\xi)$  where  $L'(\omega(\xi)) = \xi/p$ . Hence  $\lim_{\xi \rightarrow +\infty} \omega(\xi) = 1$  and

$$\begin{aligned} \lim_{\xi \rightarrow +\infty} H(x, \xi, p) &= \lim_{\xi \rightarrow +\infty} \left[ L(\omega(\xi)) - \frac{\omega(\xi)}{p} \xi + \left( \frac{\lambda + r}{p} - \lambda + \sigma^2 - \mu \right) x \xi \right] \\ &\geq \lim_{\xi \rightarrow +\infty} L(\omega(\xi)) = +\infty. \end{aligned}$$

□

### 3 Existence of solutions

Let  $x^* > 0$  be given. If a solution  $(V, p)$  to the boundary value problem (2.15)-(2.16) is found, then the feedback control  $u = u^*(x)$  defined at (2.11) and the function  $p = p(x)$  provide an equilibrium solution to the debt management problem. In other words, for every initial value  $x_0$  of the debt, the following holds.

- (i) Consider the stochastic dynamics (2.2), with  $u(t) = u^*(x(t))$  and  $p(t) = p(x(t))$ . Then for every  $x_0 \in [0, x^*]$  the identity (2.12) holds, where  $T_b$  is the random bankruptcy time defined at (2.4).
- (ii) Given the discounted price  $p = p(x)$ , for every initial data  $x(0) = x_0 \in [0, x^*]$  the feedback control  $u = u^*(x)$  is optimal for the stochastic optimization problem

$$\text{minimize: } E \left[ \int_0^{T_b} e^{-rt} L(u^*(x(t))) dt + e^{-rT_b} B \right]. \quad (3.1)$$

with stochastic dynamics (2.2), where  $p(t) = p(x(t))$ .

To construct a solution to the system (2.15)-(2.16), we consider the auxiliary parabolic system

$$\begin{cases} V_t(t, x) &= -rV(t, x) + H(x, V_x(t, x), p(t, x)) + \frac{(\sigma x)^2}{2} \cdot V_{xx}(t, x), \\ p_t(t, x) &= (r + \lambda)(1 - p(t, x)) + H_\xi(x, V_x(t, x), p(t, x)) \cdot p_x(t, x) + \frac{(\sigma x)^2}{2} \cdot p_{xx}(t, x), \end{cases} \quad (3.2)$$

with boundary conditions (2.16). Following [2], the main idea is to construct a compact, convex set of functions  $(V, p) : [0, x^*] \mapsto [0, B] \times [\theta(x^*), 1]$  which is positively invariant for the parabolic evolution problem. A topological technique will then yield the existence of a steady state, i.e. a solution to (2.15)-(2.16).

**Theorem 3.1.** *In addition to **(A)**, assume that  $\sigma > 0$  and  $\theta(x^*) > 0$ . Then the system of second order ODEs (2.15) with boundary conditions (2.16) admits a  $\mathcal{C}^2$  solution  $(\bar{V}, \bar{p})$ , such that  $\bar{V} : [0, x^*] \rightarrow [0, B]$  is increasing and  $\bar{p} : [0, x^*] \rightarrow [\theta(x^*), 1]$  is decreasing.*

*Proof.*

1. For any  $\varepsilon > 0$ , consider the parabolic system

$$V_t = -rV + H(x, V_x, p) + \left( \varepsilon + \frac{(\sigma x)^2}{2} \right) V_{xx}, \quad \begin{cases} V(0) &= 0, \\ V(x^*) &= B, \end{cases} \quad (3.3)$$

$$p_t = (r + \lambda)(1 - p) + H_\xi(x, V_x, p)p_x + \left( \varepsilon + \frac{(\sigma x)^2}{2} \right) p_{xx}, \quad \begin{cases} p(0) &= 1, \\ p(x^*) &= \theta(x^*). \end{cases} \quad (3.4)$$

obtained from (3.2) by adding the terms  $\varepsilon V_{xx}$ ,  $\varepsilon p_{xx}$  on the right hand sides. For any  $\varepsilon > 0$ , this renders the system uniformly parabolic, also in a neighborhood of  $x = 0$ .



2. Adopting a semigroup notation, let  $t \mapsto (V(t), p(t)) = S_t(V_0, p_0)$  be the solution of the system (3.3)-(3.4), with initial data

$$V(0, x) = V_0(x), \quad p(0, x) = p_0(x). \quad (3.5)$$

Consider the closed, convex set of functions

$$\mathcal{D} = \left\{ (V, p) : [0, x^*] \mapsto [0, B] \times [\theta(x^*), 1] ; \quad V, p \in \mathcal{C}^2, V_x \geq 0, p_x \leq 0, \text{ and (2.16) holds} \right\}. \quad (3.6)$$

We claim that the above domain is positively invariant under the semigroup  $S$ , namely

$$S_t(\mathcal{D}) \subseteq \mathcal{D} \quad \text{for all } t \geq 0. \quad (3.7)$$

Indeed, consider the constant functions

$$\begin{cases} V^+(t, x) = B, & p^+(t, x) = 1, \\ V^-(t, x) = 0, & p^-(t, x) = \theta(x^*). \end{cases}$$

Recalling (2.19), one easily checks that  $V^+$  is a supersolution and  $V^-$  is a subsolution of the scalar parabolic problem (3.3). Indeed

$$\begin{aligned} -rV^+ + H(x, V_x^+, p) + \left( \varepsilon + \frac{(\sigma x)^2}{2} \right) V_{xx}^+ &\leq 0, & V^+(t, 0) &\geq 0, & V^+(t, x^*) &\geq B. \\ -rV^- + H(x, V_x^-, p) + \left( \varepsilon + \frac{(\sigma x)^2}{2} \right) V_{xx}^- &\geq 0, & V^-(t, 0) &\leq 0, & V^-(t, x^*) &\leq B. \end{aligned}$$

Similarly,  $p^+$  is a supersolution and  $p^-$  is a subsolution of the scalar parabolic problem (3.4).

This proves that, if the initial data  $V_0, p_0$  in (3.5) take values in the box  $[0, B] \times [\theta(x^*), 1]$ , then for every  $t \geq 0$  the solution of the system (3.3)-(3.4) will satisfy

$$0 \leq V(t, x) \leq B, \quad \theta(x^*) \leq p(t, x) \leq 1, \quad (3.8)$$

for all  $x \in [0, x^*]$ . In turn, this implies

$$\begin{cases} V_x(t, 0) \geq 0, & p_x(t, 0) \leq 0, \\ V_x(t, x^*) \geq 0, & p_x(t, x^*) \leq 0. \end{cases} \quad (3.9)$$

3. Next, we prove that the monotonicity properties of  $V(t, \cdot)$  and  $p(t, \cdot)$  are preserved in time. Differentiating w.r.t.  $x$  one obtains

$$V_{xt} = -rV_x + H_x + H_\xi V_{xx} + H_p p_x + \sigma^2 x V_{xx} + \left( \varepsilon + \frac{(\sigma x)^2}{2} \right) V_{xxx}, \quad (3.10)$$

$$p_{xt} = -(r + \lambda)p_x + \left( \frac{d}{dx} H_\xi(x, V_x, p) \right) p_x + H_\xi p_{xx} + \sigma^2 x p_{xx} + \left( \varepsilon + \frac{(\sigma x)^2}{2} \right) p_{xxx}. \quad (3.11)$$

By (2.19), for every  $x, p$  one has  $H_x(x, 0, p) = H_p(x, 0, p) = 0$ . Hence  $V_x \equiv 0$  is a subsolution of (3.10) and  $p_x \equiv 0$  is a supersolution of (3.11). In view of (3.9), we obtain

$$p_x(t, x) \leq 0 \leq V_x(t, x) \quad \text{for all } t \geq 0, \quad x \in [0, x^*].$$

This concludes the proof that the set  $\mathcal{D}$  in (3.6) is positively invariant for the system (3.3)-(3.4).

4. Thanks to the bounds (2.17)-(2.18), we can now apply Theorem 3 in [2] and obtain the existence of a steady state  $(V^\varepsilon, p^\varepsilon) \in \mathcal{D}$  for the system (3.3)-(3.4).

We recall the main argument in [2]. For every  $T > 0$  the map  $(V_0, p_0) \mapsto S_T(V_0, p_0)$  is a compact transformation of the closed convex domain  $\mathcal{D}$  into itself. By Schauder's theorem it has a fixed point. This yields a periodic solution of the parabolic system (3.3)-(3.4), with period  $T$ . Letting  $T \rightarrow 0$ , one obtains a steady state.

5. It now remains to derive a priori estimates on this stationary solution, which will allow to take the limit as  $\varepsilon \rightarrow 0$ . Consider any solution to

$$\begin{cases} -rV + H(x, V', p) + \left( \varepsilon + \frac{(\sigma x)^2}{2} \right) V'' & = 0, \\ (r + \lambda)(1 - p) + H_\xi(x, V', p)p' + \left( \varepsilon + \frac{(\sigma x)^2}{2} \right) p'' & = 0, \end{cases} \quad (3.12)$$

with  $V$  increasing,  $p$  decreasing, and satisfying the boundary conditions (2.16).

By the properties of  $H$  derived in Lemma 2.1, we can find  $\delta > 0$  small enough and  $\xi_0 > 0$  such that the following implication holds:

$$x \in [0, \delta], \quad p \in [\theta(x^*), 1], \quad \xi \geq \xi_0 \quad \implies \quad H(x, \xi, p) \leq 0.$$

As a consequence, if  $V'(x) > \xi_0$  for some  $x \in [0, \delta]$ , then the first equation in (3.12) implies  $V''(x) \geq 0$ . We conclude that either  $V'(x) \leq \xi_0$  for all  $x \in [0, x^*]$ , or else  $V'$  attains its maximum on the subinterval  $[\delta, x^*]$ .

By the intermediate value theorem, there exists a point  $\hat{x} \in [\delta, x^*]$  where

$$V'(\hat{x}) = \frac{V(x^*) - V(\delta)}{x^* - \delta} \leq \frac{B}{x^* - \delta}. \quad (3.13)$$

By (2.17), the derivative  $V'$  satisfies a differential inequality of the form

$$|V''| \leq c_1 |V'| + c_2, \quad x \in [\delta, x^*]. \quad (3.14)$$

for suitable constants  $c_1, c_2$ . By Gronwall's lemma, from the differential inequality (3.14) and the estimate (3.13) one obtains a uniform bound on  $V'(x)$ , for all  $x \in [\delta, \hat{x}] \cup [\hat{x}, x^*]$ .

6. Similar arguments apply to  $p'$ . By (2.18), the term  $H_\xi(x, V', p)$  in (3.12) is uniformly bounded. For every  $\delta > 0$ , by (3.12) shows that  $p'$  satisfies a linear ODE whose coefficients remain bounded on  $[\delta, x^*]$ , uniformly w.r.t.  $\varepsilon$ . This yields the bound

$$|p'(x)| \leq C_\delta \quad \text{for all } x \in [\delta, x^*]$$

for some constant  $C_\delta$ , uniformly valid as  $\varepsilon \rightarrow 0$ .

To make sure that, as  $\varepsilon \rightarrow 0$ , the limit satisfies the boundary value  $p(0) = 1$ . one needs to provide a lower bound on  $p$  also in a neighborhood of  $x = 0$ , independent of  $\varepsilon$ . Introduce the constant

$$\gamma \doteq \min \left\{ 1, (r + \lambda) \left( \frac{\lambda + r}{\theta(x^*)} - \lambda + \sigma^2 - \mu \right)^{-1} \right\}.$$

Then define

$$p^-(x) \doteq 1 - cx^\gamma,$$

choosing  $c > 0$  so that  $p^-(x^*) = \theta(x^*)$ . We claim that the convex function  $p^-$  is a lower solution of the second equation in (3.12). Indeed, by (3.12), one has

$$(r + \lambda)cx^\gamma - H_\xi(x, V', p) c\gamma x^{\gamma-1} \geq \left[ (r + \gamma) - \left( \frac{\lambda + r}{\theta(x^*)} - \lambda + \sigma^2 - \mu \right) \gamma \right] cx^\gamma \geq 0.$$

7. Letting  $\varepsilon \rightarrow 0$ , we now consider a sequence  $(V^\varepsilon, p^\varepsilon)$  of solutions to (3.12) with boundary conditions (2.16). Thanks to the previous estimates, the functions  $V^\varepsilon$  are uniformly Lipschitz continuous on  $[0, x^*]$ , while the functions  $p^\varepsilon$  are Lipschitz continuous on any subinterval  $[\delta, x^*]$  and satisfy

$$p^-(x) \leq p^\varepsilon(x) \leq 1 \quad \text{for all } x \in [0, x^*], \quad \varepsilon > 0.$$

By choosing a suitable subsequence, we achieve the uniform convergence  $(V^\varepsilon, p^\varepsilon) \rightarrow (V, p)$ , where  $V, p$  are twice continuously differentiable on the open interval  $]0, x^*[$ , and satisfy the boundary conditions (2.16).

□

## 4 The deterministic case

If  $\sigma = 0$ , then the stochastic equation (2.2) reduces to the deterministic control system

$$\dot{x} = \left( \frac{\lambda + r}{p} - \lambda - \mu \right) x - \frac{u}{p}. \quad (4.1)$$

We then consider the deterministic Debt Management Problem.

**(DMP)** *Given an initial value  $x(0) = x_0 \in [0, x^*]$  of the debt, minimize*

$$\int_0^{T_b} e^{-rt} L(u(t)) dt + e^{-rT_b} B, \quad (4.2)$$

subject to the dynamics (4.1), where the bankruptcy time  $T_b$  is defined as in (2.4), while

$$p(t) = \int_t^{T_b} (r+\lambda)e^{-(r+\lambda)s} ds + e^{-(r+\lambda)(T_b-t)} \cdot \theta(x^*) = 1 - (1 - \theta(x^*)) e^{-(r+\lambda)(T_b-t)}. \quad (4.3)$$

Since in this case the optimal feedback control  $u^*$  and the corresponding functions  $V, p$  may not be smooth, a concept of equilibrium solution should be more carefully defined.

**Definition 4.1** (Equilibrium solution in feedback form). A couple of piecewise Lipschitz continuous functions  $u = u^*(x)$  and  $p = p^*(x)$  provide an equilibrium solution to the debt management problem (DMP), with continuous value function  $V^*$ , if

- (i) For every  $x_0 \in [0, x^*]$ ,  $V^*$  is the minimum cost for the optimal control problem

$$\text{minimize: } \int_0^{T_b} e^{-rt} L(u(x(t))) dt + e^{-rT_b} B, \quad (4.4)$$

subject to

$$\dot{x}(t) = \left( \frac{\lambda + r}{p^*(x(t))} - \lambda - \mu \right) x(t) - \frac{u(t)}{p^*(x(t))}, \quad x(0) = x_0. \quad (4.5)$$

Moreover, every Carathéodory solution of (4.5) with  $u(t) = u^*(x(t))$  is optimal.

- (ii) For every  $x_0 \in [0, x^*]$ , there exists at least one solution  $t \mapsto x(t)$  of the Cauchy problem

$$\dot{x} = \left( \frac{\lambda + r}{p^*(x)} - \lambda - \mu \right) x - \frac{u^*(x)}{p^*(x)}, \quad x(0) = x_0, \quad (4.6)$$

such that

$$p^*(x_0) = \int_0^{T_b} (r + \lambda) e^{-(r+\lambda)t} dt + e^{-(r+\lambda)T_b} \theta(x^*) = 1 - (1 - \theta(x^*)) \cdot e^{-(r+\lambda)T_b}, \quad (4.7)$$

with  $T_b$  as in (2.4).

In the deterministic case, (2.15) takes the form

$$\begin{cases} rV(x) & = H(x, V'(x), p(x)), \\ (r + \lambda)(p(x) - 1) & = H_\xi(x, V'(x), p(x)) p'(x), \end{cases} \quad (4.8)$$

with Hamiltonian function (see Fig. 4)

$$H(x, \xi, p) = \min_{\omega \in [0, 1]} \left\{ L(\omega) - \frac{\xi}{p} \omega \right\} + \left( \frac{\lambda + r}{p} - (\lambda + \mu) \right) x \xi. \quad (4.9)$$

We consider solutions to (4.8) with the boundary condition

$$\begin{cases} V(0) & = 0, & p(0) & = 1, \\ V(x^*) & = B, & p(x^*) & = \theta(x^*). \end{cases} \quad (4.10)$$

Introduce the function

$$H^{\max}(x, p) \doteq \sup_{\xi \geq 0} H(x, \xi, p) = L\left((\lambda + r)x - (\lambda + \mu)px\right),$$

with the understanding that

$$H^{\max}(x, p) = +\infty \quad \text{if} \quad (\lambda + r)x - (\lambda + \mu)px \geq 1. \quad (4.11)$$

If  $(\lambda + r)x - (\lambda + \mu)px < 1$ , recalling (4.1) we define

$$u^\sharp(x, p) = (\lambda + r)x - (\lambda + \mu)px. \quad (4.12)$$

Notice that  $u^\sharp$  is the control that keeps the debt  $x$  constant in time. This value  $u^\sharp$  achieves the minimum in (4.9) when

$$L'\left((\lambda + r)x - (\lambda + \mu)px\right) = \frac{\xi}{p}.$$

This motivates the definition

$$\xi^\sharp(x, p) \doteq \operatorname{argmax}_{\xi \geq 0} H(x, \xi, p) = p L'\left((\lambda + r)x - (\lambda + \mu)px\right). \quad (4.13)$$

On the other hand, if  $(\lambda + r)x - (\lambda + \mu)px \geq 1$ , then the function  $\xi \mapsto H(x, \xi, p)$  is monotone increasing and we define  $\xi^\sharp(x, p) \doteq +\infty$ . Observe that

$$H_{\xi\xi}(x, \xi, p) \leq 0, \quad \begin{cases} H_\xi(x, \xi, p) > 0 & \text{for all } 0 \leq \xi < \xi^\sharp(x, p), \\ H_\xi(x, \xi, p) < 0 & \text{for all } \xi > \xi^\sharp(x, p). \end{cases} \quad (4.14)$$

We regard the first equation in (4.8) as an implicit ODE for the function  $V$ . For every  $x \geq 0$  and  $p \in [0, 1]$ , if  $rV(x) > H^{\max}(x, p)$ , then this equation has no solution. On the other hand, when

$$0 \leq rV(x) \leq H^{\max}(x, p),$$

the implicit ODE (4.8) can equivalently be written as a differential inclusion (Fig. 4):

$$V'(x) \in \left\{ F^-(x, V, p), F^+(x, V, p) \right\}. \quad (4.15)$$

*Remark 4.2.* Recalling (4.1), we observe that

- The value  $V' = F^+(x, V, p) \geq \xi^\sharp(x, p)$  corresponds to the choice of an optimal control such that  $\dot{x} < 0$ .
- The value  $V' = F^-(x, V, p) \leq \xi^\sharp(x, p)$  corresponds to the choice of an optimal control such that  $\dot{x} > 0$ .
- When  $rV = H^{\max}(x, p)$ , then the value  $V' = F^+(x, V, p) = F^-(x, V, p) = \xi^\sharp(x, p)$  corresponds to the unique control such that  $\dot{x} = 0$ .

Since  $\xi \mapsto H(x, \xi, p)$  is concave down, the functions  $F^\pm$  satisfy the following monotonicity properties (Fig. 4)

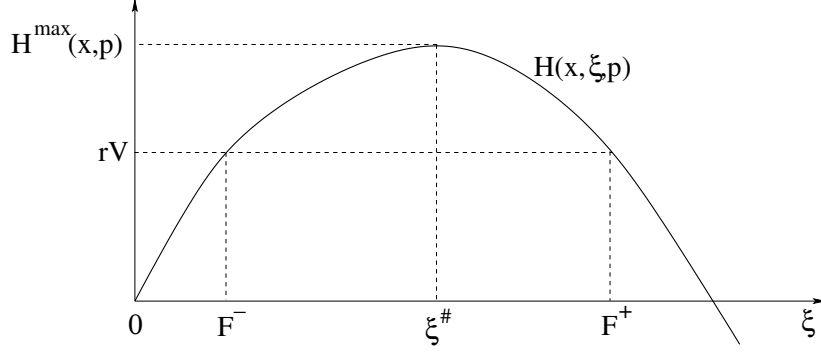


Figure 1: In the case where  $(\lambda + r)x - (\lambda + \mu)px < 1$ , the the Hamiltonian function  $\xi \mapsto H(x, \xi, p)$  has a global maximum  $H^{max}(x, p)$ . For  $rV \leq H^{max}$ , the values  $F^-(x, V, p) \leq \xi^\#(x, p) \leq F^+(x, V, p)$  are well defined.

**(MP)** For any fixed  $x, p$ , the map  $V \mapsto F^+(x, V, p)$  is decreasing, while  $V \mapsto F^-(x, V, p)$  is increasing.

For  $V' = F^-$ , the second ODE in (4.8) can be written as

$$p'(x) = G^-(x, V(x), p(x)),$$

where

$$G^-(x, V, p) \doteq \frac{(r + \lambda)(p - 1)}{H_\xi(x, F^-(x, V, p), p)} \leq 0. \quad (4.16)$$

#### 4.1 Construction of a solution.

Consider the function

$$W(x) \doteq \frac{1}{r}L((r - \mu)x), \quad (4.17)$$

with the understanding that  $W(x) = +\infty$  if  $(r - \mu)x \geq 1$ . Notice that  $W(x)$  is the total cost of keeping the debt constantly equal to  $x$  (in which case there would be no bankruptcy and hence  $p \equiv 1$ ).

Moreover, denote by  $(V_B(\cdot), p_B(\cdot))$  the solution to the system of ODEs

$$\begin{cases} V'(x) &= F^-(x, V(x), p(x)), \\ p'(x) &= G^-(x, V(x), p(x)), \end{cases} \quad (4.18)$$

with terminal conditions

$$V(x^*) = B, \quad p(x^*) = \theta(x^*). \quad (4.19)$$

Next, consider the point

$$x_1 \doteq \inf \left\{ x \in [0, x^*]; V_B(x) < W(x) \right\}, \quad (4.20)$$

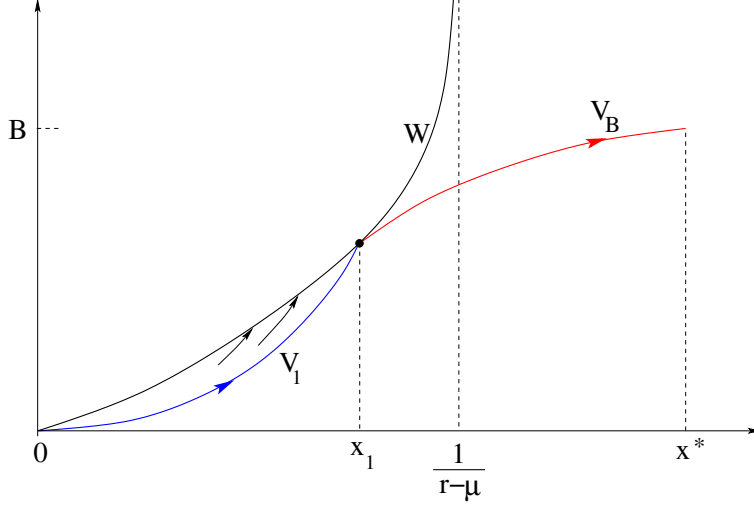


Figure 2: Constructing the equilibrium solution in feedback form. For an initial value of the debt  $x(0) \leq x_1$ , the debt increases until it reaches  $x_1$ , then it is held at the constant value  $x_1$ . If the initial debt is  $x(0) > x_1$ , the debt keeps increasing until it reaches bankruptcy in finite time.

and call  $V_1(\cdot)$  the solution to the backward Cauchy problem

$$\begin{cases} V'(x) = F^-(x, V(x), 1), & x \in [0, x_1], \\ V(x_1) = W(x_1). \end{cases} \quad (4.21)$$

We will show that a feedback equilibrium solution to the debt management problem is obtained as follows (see Fig. 4.1).

$$V^*(x) = \begin{cases} V_1(x) & \text{if } x \in [0, x_1], \\ V_B(x) & \text{if } x \in [x_1, x^*]. \end{cases} \quad (4.22)$$

$$p^*(x) = \begin{cases} 1, & \text{if } x \in [0, x_1], \\ p_B(x), & \text{if } x \in ]x_1, x^*]. \end{cases} \quad (4.23)$$

$$u^*(x) = \begin{cases} \operatorname{argmin}_{\omega \in [0,1]} \left\{ L(\omega) - \frac{(V^*)'(x)}{p^*(x)} \omega \right\}, & \text{if } x \neq x_1, \\ (r - \mu)x_1, & \text{if } x = x_1. \end{cases} \quad (4.24)$$

**Theorem 4.3.** *Assume that the cost function  $L$  satisfies the assumptions **(A)**, and moreover  $L((r - \mu)x^*) > rB$ . Then the functions  $V^*, p^*, u^*$  in (4.22)–(4.24) are well defined, and provide an equilibrium solution to the debt management problem, in feedback form.*

*Proof.*

1. The solution of (4.18)–(4.19) satisfies the obvious bounds

$$V' \geq 0, \quad p' \leq 0, \quad V(x) \leq B, \quad p(x) \in [\theta(x^*), 1].$$

We begin by proving that the function  $V_B$  is well defined and strictly positive for  $x \in ]x_1, x^*]$ .

To prove that

$$V_B(x) > 0 \quad \text{for all } x \in ]x_1, x^*],$$

assume, on the contrary, that  $V_B(y) = 0$  for some  $y > x_1 \geq 0$ . By the properties of the function  $F^-$  (see Fig. 4) it follows

$$F^-(x, V, p) \leq C_2 V, \quad (4.25)$$

for some constant  $C_2$  and all  $x \in [y, x^*]$ ,  $p \in [\theta(x^*), 1]$ . Hence, for any solution of (4.18),  $V(y) = 0$  implies  $V(x) = 0$  for all  $x \geq y$ , providing a contradiction.

Next, observe that the functions  $F^-, G^-$  are locally Lipschitz continuous as long as  $0 \leq V < H^{max}(x, p)$ . Moreover,  $V(x) < W(x)$  implies

$$V(x) < W(x) = H^{max}(x, 1) \leq H^{max}(x, p(x)).$$

Therefore, the functions  $V_B, p_B$  are well defined on the interval  $[x_1, x^*]$ .

- 2.** If  $x_1 = 0$  the construction of the functions  $V^*, p^*, u^*$  is already completed in step **1.**. In the case where  $x_1 > 0$ , we claim that the function  $V_1$  is well defined and satisfies

$$0 < V_1(x) < W(x) \quad \text{for } 0 < x < x_1. \quad (4.26)$$

Indeed, if  $V_1(y) = 0$  for some  $y > 0$ , the Lipschitz property (4.25) again implies that  $V_1(x) = 0$  for all  $x \geq y$ . This contradicts the terminal condition in (4.21).

To complete the proof of our claim (4.26), it suffices to show that

$$W'(x) < F^-(x, W(x), 1) \quad \text{for all } x \in ]0, x_1]. \quad (4.27)$$

This is true because

$$\begin{aligned} W'(x) &= \frac{r - \mu}{r} L'(r - \mu)x = \frac{r - \mu}{r} \xi^\#(x, 1) < \xi^\#(x, 1) \\ &= F^-(x, H^{max}(x, 1), 1) = F^-(x, W(x), 1). \end{aligned}$$

- 3.** In the remaining steps, we show that  $V^*, p^*, u^*$  provide an equilibrium solution. Namely, they satisfy the properties (i)-(ii) in Definition 4.1.

To prove (i), call  $V(\cdot)$  the value function for the optimal control problem (4.4)-(4.5).

For any initial value,  $x(0) = x_0$ , in both cases  $x_0 \in [0, x_1]$  and  $x_0 \in ]x_1, x^*]$ , the feedback control  $u^*$  in (4.24) yields the cost  $V^*(x_0)$ . This implies

$$V(x_0) \leq V^*(x_0).$$

To prove the converse inequality we need to show that, for any measurable control  $u : [0, +\infty[ \mapsto [0, 1]$ , calling  $t \mapsto x(t)$  the solution to

$$\dot{x} = \left( \frac{\lambda + r}{p_{x_1}(x)} - \lambda - \mu \right) x - \frac{u(t)}{p_{x_1}(x)}, \quad x(0) = x_0, \quad (4.28)$$



one has

$$\int_0^{T_b} e^{-rt} L(u(t)) dt + e^{-rT_b} B \geq V^*(x_0), \quad (4.29)$$

where

$$T_b = \inf \{t \geq 0; x(t) = x^*\}$$

is the bankruptcy time (possibly with  $T_b = +\infty$ ).

For  $t \in [0, T_b]$ , consider the absolutely continuous function

$$\phi^u(t) \doteq \int_0^t e^{-rs} L(u(s)) ds + e^{-rt} V^*(x(t)).$$

At any Lebesgue point  $t$  of  $u(\cdot)$ , we compute

$$\begin{aligned} \frac{d}{dt} \phi^u(t) &= e^{-rt} \left[ L(u(t)) - rV^*(x(t)) + (V^*)'(x(t)) \cdot \dot{x}(t) \right] \\ &= e^{-rt} \left[ L(u(t)) - rV^*(x(t)) + (V^*)'(x(t)) \left( \left( \frac{\lambda + r}{p^*(x(t))} - \lambda - \mu \right) x(t) - \frac{u(t)}{p^*(x(t))} \right) \right] \\ &\geq e^{-rt} \left[ \min_{\omega \in [0,1]} \left\{ L(\omega) - \frac{(V^*)'(x(t))}{p^*(x(t))} \omega \right\} + \left( \frac{\lambda + r}{p^*(x(t))} - \lambda - \mu \right) x(t) (V^*)'(x(t)) - rV^*(x(t)) \right] \\ &= e^{-rt} \left[ H(x(t), (V^*)'(x(t)), p^*(x(t))) - rV^*(x(t)) \right] = 0. \end{aligned}$$

Therefore,

$$V^*(x_0) = \phi^u(0) \leq \lim_{t \rightarrow T_b^-} \phi^u(t) = \int_0^{T_b} e^{-rt} L(u(t)) dt + e^{-rT_b} B,$$

proving (4.29).

4. It remains to check (ii). The case  $x_0 = 0$  is trivial. Two main cases will be considered.

*CASE 1:*  $x_0 \in ]0, x_1]$ . Then there exists a solution  $t \mapsto x(t)$  of (4.6) such that  $p(t) = 1$  and  $x(t) \in ]0, x_1]$  for all  $t > 0$ . Moreover,

$$\lim_{t \rightarrow +\infty} x(t) = x_1.$$

In this case,  $T_b = +\infty$  and (4.7) holds.

*CASE 2:*  $x_0 \in ]x_1, x^*]$ . Then  $x(t) > x_1$  for all  $t \in [0, T_b]$ . This implies

$$\dot{x}(t) = H_\xi(x(t), V_B(x(t)), p_B(x(t))).$$

From the second equation in (4.8) it follows

$$\dot{p}(t) = p'(x(t)) \dot{x}(t) = (r + \lambda)(p(t) - 1),$$

$$\frac{d}{dt} \ln(1 - p(x(t))) = (r + \lambda).$$

Therefore, for every  $t \in [0, T_b]$  one has

$$p(x(0)) = 1 - (1 - p(x(t))) \cdot e^{-(r+\lambda)t}.$$

Letting  $t \rightarrow T_b$  we obtain

$$p(x_0) = 1 - (1 - \theta(x^*)) \cdot e^{-(r+\lambda)T_b},$$

proving (4.7). □

*Remark 4.4.* The construction described at (4.22)–(4.24) uniquely determines a feedback equilibrium solution to the debt management problem.

In general, however, we cannot rule out the possibility that a second solution exists. Indeed, if the solution  $V_B, p_B$  of (4.18)–(4.19) can be prolonged backwards to the entire interval  $[0, x^*]$ , then we could replace (4.22)–(4.23) simply by  $V^*(x) = V_B(x)$ ,  $p^*(x) = p_B(x)$  for all  $x \in [0, x^*]$ . This would yield a second solution.

We claim that no other solutions can exist. This is based on the fact that the graphs of  $W$  and  $V_B$  cannot have any other intersection, in addition to 0 and  $x_1$ . Indeed, assume on the contrary that  $W(x_2) = V_B(x_2)$  for some  $0 < x_2 < x_1$  (see Fig. 4.1). Since  $p_B(x_2) < 1$  and  $W'(x_2) \leq V_B'(x_2)$ , the inequalities

$$rW(x_2) = H(x_2, W'(x_2), 1) < H(x_2, W'(x_2), p_B(x_2)) \leq H(x_2, V_B'(x_2), p_B(x_2)) = rV_B(x_2)$$

yield a contradiction.

Next, let  $V^\dagger, p^\dagger$  be any equilibrium solution and define

$$x^\dagger \doteq \sup\{x \in [0, x^*]; p(x) = 1\}.$$

Then

- On  $]x^\dagger, x^*]$  the functions  $V^\dagger, p^\dagger$  provide a solution to the backward Cauchy problem (4.18)–(4.19).
- On  $]0, x^\dagger]$  the function  $V^\dagger$  provides the value function for the optimal control problem

$$\text{minimize: } \int_0^\infty e^{-rt} L(u(t)) dt$$

subject to the dynamics (with  $p \equiv 1$ )

$$\dot{x} = (r - \mu)x - u,$$

and the state constraint  $x(t) \in [0, x^\dagger]$  for all  $t \geq 0$ .

The above implies

$$\begin{cases} V^\dagger(x) = V_B(x), & \text{if } x \in [x^\dagger, x^*], \\ V^\dagger(x) \leq W(x), & \text{if } x \in [0, x^\dagger]. \end{cases}$$

Since  $V^\dagger$  must be continuous at the point  $x_2$ , by the previous analysis this is possible only if  $x_2 = 0$  or  $x_2 = x_1$ .

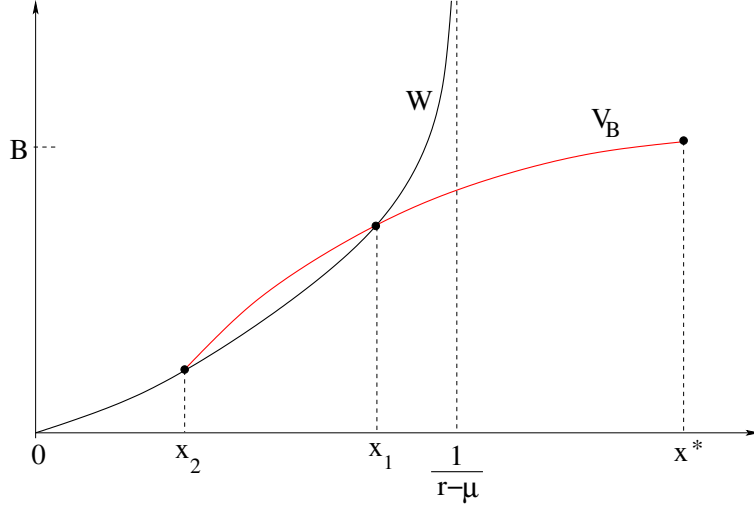


Figure 3: By the monotonicity properties of the Hamiltonian function  $H$  in (4.9), the graphs of  $V_B$  and  $W$  cannot have a second intersection at a point  $x_2 > 0$ .

## 5 Dependence on the bankruptcy threshold $x^*$ .

In this section we study the behavior of the value function  $V_B$  when the maximum size  $x^*$  of the debt, at which bankruptcy is declared, becomes very large.

For a given  $x^* > 0$ , we denote by  $V_B(\cdot, x^*)$ ,  $p_B(\cdot, x^*)$  the solution to the system (4.18) with terminal data (4.19). Letting  $x^* \rightarrow \infty$ , we wish to understand whether the value function  $V_B$  remains positive, or approaches zero uniformly on bounded sets. Toward this goal, we introduce the constant

$$M_1 \doteq \frac{2rB}{(r-\mu)L'(0)}. \quad (5.1)$$

From (4.8) and (4.9) it follows

$$\frac{V'_B(x, x^*)}{p_B(x, x^*)} \leq \frac{rV_B(x, x^*)}{(r-\mu)x-1}.$$

In turn, if  $x^* > M_1$ , this implies

$$\frac{V'_B(x, x^*)}{p_B(x, x^*)} \leq L'(0), \quad \text{for all } x \in [M_1, x^*].$$

Calling  $u = u^*(x)$  the optimal feedback control, by (2.11) we have

$$u^*(x) = 0, \quad \text{for all } x \in [M_1, x^*]. \quad (5.2)$$

In this case, the Hamiltonian function takes a simpler form, namely

$$\begin{aligned} H(x, V', p) &= [(\lambda + r) - (\lambda + \mu)p] \cdot \frac{V'x}{p}, \\ H_\xi(x, V', p) &= [(\lambda + r) - (\lambda + \mu)p]x. \end{aligned}$$

Therefore, the system of ODEs (4.18) can be written as

$$\begin{cases} V' &= \frac{rp}{[(\lambda+r) - (\lambda+\mu)p]x} V, \\ p' &= (\lambda+r) \cdot \frac{p(p-1)}{[(\lambda+r) - (\lambda+\mu)p]x}. \end{cases} \quad (5.3)$$

The second ODE of in (5.3) is equivalent to

$$\frac{d}{dx} \ln \left( \frac{(1-p(x))^{r-\mu}}{p(x)^{r+\lambda}} \right) = \frac{r+\lambda}{x}.$$

Solving backward the above ODE with the terminal data  $p(x^*) = \theta(x^*)$ , we obtain

$$p_B(x, x^*) = \frac{\theta(x^*)x^*}{x} \cdot \left( \frac{1-p_B(x, x^*)}{1-\theta(x^*)} \right)^{\frac{r-\mu}{r+\lambda}} \quad \text{for all } x \in [M_1, x^*]. \quad (5.4)$$

Therefore,

$$p_B(x, x^*) \geq \frac{\left( \frac{\theta(x^*)x^*}{x} \right)^{\frac{r+\lambda}{r-\mu}}}{1 + \left( \frac{\theta(x^*)x^*}{x} \right)^{\frac{r+\lambda}{r-\mu}}} \quad \text{for all } x \in [M_1, x^*]. \quad (5.5)$$

Different cases will be considered, depending on the properties of the function  $\theta(\cdot)$ . By obvious modeling considerations, we shall always assume

$$\theta(x) \in [0, 1], \quad \theta'(x) \leq x \quad \text{for all } x \geq 0.$$

We first study the case where  $\theta$  has compact support. Recall that  $M_1$  is the constant in (5.1).

**Lemma 5.1.** *Assume that*

$$\theta(x) = 0 \quad \text{for all } x \geq M_2, \quad (5.6)$$

for some constant  $M_2 \geq M_1$ . Then, for any  $x^* > M_2$ , the solution  $V_B(\cdot, x^*)$ ,  $p_B(\cdot, x^*)$  of (4.18)-(4.19) satisfies

$$V_B(x, x^*) = B \quad \text{and} \quad p_B(x, x^*) = 0 \quad \text{for all } x \in [M_2, x^*].$$

*Proof.* By (5.4) and (5.6), for every  $x^* > M_2$  one has

$$p_B(x, x^*) = 0 \quad \text{for all } x \in [M_2, x^*].$$

Inserting this into the first ODE in (5.3), we obtain

$$V_B'(x, x^*) = 0.$$

In turn, this yields  $V_B(x, x^*) = B$  for all  $x \in [M_2, x^*]$ . This means that bankruptcy instantly occurs if the debt reaches  $M_2$ .  $\square$

Next, we now consider that case where  $\theta(x) > 0$  for all  $x$ .

$$\theta(x) > 0 \quad \text{for all } x \in [0, \infty[. \quad (5.7)$$

**Lemma 5.2.** *If  $x^* > M_1$  and  $\theta(x^*) > 0$ , then*

$$V_B(x, x^*) = B \cdot \left( \frac{p_B(x, x^*)x}{\theta(x^*)x^*} \right)^{\frac{r}{r-\mu}} \quad \text{for all } x \in [M_1, x^*]. \quad (5.8)$$

*In particular, for  $x \in [M_1, x^*]$  one has*

$$B \cdot \left( 1 + \left( \frac{\theta(x^*)x^*}{x} \right)^{\frac{r+\lambda}{r-\mu}} \right)^{-\frac{r}{r+\lambda}} \leq V_B(x, x^*) \leq B \cdot \left( \frac{x}{\theta(x^*)x^*} \right)^{\frac{r}{r-\mu}}. \quad (5.9)$$

*Proof.* Observe that  $x \mapsto p_B(x, x^*)$  is a strictly decreasing function of  $x$ . For a fixed value of  $x^*$ , let  $p \mapsto \chi(p) : [\theta(x^*), 1[ \mapsto [0, x^*]$  be the inverse function of  $p_B(\cdot, x^*)$ . From (5.3), a direct computation yields

$$\begin{cases} \frac{d}{dp} V_B(\chi(p), x^*) = \frac{rp}{[(\lambda+r) - (\lambda+\mu)p] \chi(p)} \cdot V_B(\chi(p), x^*) \cdot \chi'(p), \\ \frac{d}{dp} p_B(\chi(p), x^*) = (\lambda+r) \cdot \frac{p(p-1)}{[(\lambda+r) - (\lambda+\mu)p] \cdot \chi(p)} \cdot \chi'(p) = 1. \end{cases} \quad (5.10)$$

From (5.10) it follows

$$\frac{d}{dp} \ln V_B(\chi(p), x^*) = \frac{r}{\lambda+r} \cdot \frac{1}{p-1}.$$

Solving the above ODE with the terminal data  $V_B(x^*, x^*) = B$ ,  $p_B(x^*, x^*) = \theta(x^*)$ , we obtain

$$V_B(\chi(p), x^*) = \left( \frac{1-p}{1-\theta(x^*)} \right)^{\frac{r}{r+\lambda}} B, \quad (5.11)$$

hence

$$V_B(x, x^*) = \left( \frac{1-p_B(x, x^*)}{1-\theta(x^*)} \right)^{\frac{r}{r+\lambda}} B.$$

Recalling (5.4), a direct computation yields (5.8). The upper and lower bounds for  $V_B(x, x^*)$  in (5.9) now follow from (5.5) and the inequality  $p_B(x, x^*) \leq 1$ .  $\square$

**Corollary 5.3.** *Assume that*

$$\limsup_{x \rightarrow +\infty} \theta(x)x = +\infty. \quad (5.12)$$

*Then the value function  $V^* = V^*(x, x^*)$  satisfies*

$$\lim_{x^* \rightarrow +\infty} V(x, x^*) = 0 \quad \text{for all } x \geq 0. \quad (5.13)$$

Indeed, for  $x \geq M_1$  we have  $V(x, x^*) = V_B(x, x^*)$ , and (5.13) follows from the second inequality in (5.9). When  $x < M_1$ , since the map  $x \mapsto V(x, x^*)$  is nondecreasing, we have

$$0 \leq \lim_{x^* \rightarrow \infty} V(x, x^*) \leq \lim_{x^* \rightarrow \infty} V(M_1, x^*) = 0.$$

**Corollary 5.4.** *Assume that*

$$R \doteq \limsup_{x \rightarrow +\infty} \theta(x) \cdot x < +\infty. \quad (5.14)$$

*Then*

$$V_B(x, x^*) \geq B \cdot \left(1 + \left(\frac{R}{x}\right)^{\frac{r+\lambda}{r-\mu}}\right)^{-\frac{r}{r+\lambda}} \quad \text{for all } x^* > x > M_1. \quad (5.15)$$

*Moreover, the followings holds.*

(i) *If*

$$\frac{\theta'(x)}{\theta(x)} + \frac{1}{x} \geq 0 \quad \text{and} \quad \theta'(x) \leq 0 \quad \text{for all } x > 0 \quad (5.16)$$

*then*

$$\inf_{x^* > 0} V_B(x, x^*) = \lim_{x^* \rightarrow \infty} V_B(x, x^*) > 0 \quad \text{for all } x \geq M_1. \quad (5.17)$$

(ii) *Assume that there exist*  $0 < \delta < 1$  *such that*

$$\delta \cdot \frac{\theta'(x)}{\theta(x)} + \frac{1}{x} < 0 \quad (5.18)$$

*for all*  $x$  *sufficiently large. Then, for each*  $x > M_1$ , *there exists an optimal value*  $x^* = x^*(x)$  *such that*

$$V_B(x, x^*(x)) = \inf_{x^* \geq 0} V_B(x, x^*). \quad (5.19)$$

*Proof.* It is clear that (5.15) is a consequence of (5.9) and (5.14). We only need to prove (i) and (ii). For a fixed  $x \geq M_1$ , we consider the functions of the variable  $x^*$  alone:

$$Y(x^*) \doteq V_B(x, x^*), \quad q(x^*) \doteq p_B(x, x^*).$$

Using (5.8) and (5.4), we obtain

$$\frac{Y'(x^*)}{Y(x^*)} = \frac{r}{r-\mu} \cdot \left( \frac{q'(x^*)}{q(x^*)} - \left[ \frac{\theta'(x^*)}{\theta(x^*)} + \frac{1}{x^*} \right] \right), \quad (5.20)$$

and

$$\frac{q'(x^*)}{q(x^*)} = \frac{\theta'(x^*)x^* + \theta(x^*)}{\theta(x^*)x^*} + \frac{r-\mu}{r+\lambda} \cdot \left( \frac{-q'(x^*)}{1-q(x^*)} + \frac{\theta'(x^*)}{1-\theta(x^*)} \right). \quad (5.21)$$

This implies

$$\begin{aligned} \frac{q'(x^*)}{q(x^*)} - \left[ \frac{\theta'(x^*)}{\theta(x^*)} + \frac{1}{x^*} \right] &= \left[ \frac{1}{1 + \frac{r-\mu}{r+\lambda} \cdot \frac{q(x^*)}{1-q(x^*)}} - 1 \right] \cdot \left[ \frac{\theta'(x^*)}{\theta(x^*)} + \frac{1}{x^*} \right] \\ &\quad + \frac{r-\mu}{(r+\lambda) \left( 1 + \frac{r-\mu}{r+\lambda} \cdot \frac{q(x^*)}{1-q(x^*)} \right)} \cdot \frac{\theta'(x^*)}{1-\theta(x^*)}. \end{aligned} \quad (5.22)$$

If (5.16) holds, then (5.20) and (5.22) imply

$$\frac{Y'(x^*)}{Y(x^*)} = \frac{q'(x^*)}{q(x^*)} - \left[ \frac{\theta'(x^*)}{\theta(x^*)} + \frac{1}{x^*} \right] \leq 0 \quad \text{for all } x^* > x \geq M_1.$$

Hence the function  $Y$  is non-increasing. This proves (5.17).

To prove (ii), we observe that

$$\limsup_{x^* \rightarrow \infty} \left( \frac{1}{1 + \frac{r-\mu}{r+\lambda} \cdot \frac{q(x^*)}{1-q(x^*)}} - 1 \right) < 0, \quad \lim_{x^* \rightarrow \infty} \theta(x^*) = 0.$$

Hence (5.18) and (5.22) imply

$$\frac{q'(x^*)}{q(x^*)} - \left[ \frac{\theta'(x^*)}{\theta(x^*)} - \frac{1}{x^*} \right] > 0,$$

for all  $x^*$  sufficiently large. By (5.20) this yields

$$\frac{Y'(x^*)}{Y(x^*)} > 0$$

for all  $x^*$  large enough. Hence there exists some particular value  $x^*(x) \geq x$  where the function  $x^* \mapsto Y(x^*) = V_B(x, x^*)$  attains its global minimum. This yields (5.19).  $\square$

## 6 Dependence on $x^*$ in the stochastic case

In this section we study how the value function depends on the bankruptcy threshold  $x^*$ , in the stochastic case where  $\sigma > 0$ . Extensions of Corollaries 5.3 and 5.4, will be proved, constructing upper and lower bounds for the solution  $V(\cdot, x^*)$ ,  $p(\cdot, x^*)$  of the system (2.15)-(2.16), in the form

$$V_2(x) \leq V(x, x^*) \leq V_1(x), \quad p_1(x) \leq p(x, x^*) \leq p_2(x). \quad (6.1)$$

1. We begin by constructing a suitable pair of functions  $V_1, p_1$ . Let  $(p_1, \tilde{V}_1)$  be the solution to the backward Cauchy problem

$$\begin{cases} r\tilde{V}_1(x) &= \left( \frac{\lambda+r}{p_1} + \sigma^2 \right) x\tilde{V}_1', \\ (r+\lambda)(p_1-1) &= \left( \frac{\lambda+r}{p_1} + \sigma^2 \right) xp_1', \end{cases} \quad \begin{cases} \tilde{V}_1(x^*) &= B, \\ p_1(x^*) &= \theta(x^*). \end{cases} \quad (6.2)$$

This solution satisfies

$$p_1(x) = \frac{\theta(x^*)x^*}{x} \cdot \left( \frac{1-p_1(x)}{1-\theta(x^*)} \right)^{\frac{\sigma^2+\lambda+r}{\lambda+r}}, \quad \lim_{x \rightarrow 0^+} p_1(x) = 1, \quad (6.3)$$

$$\tilde{V}_1(x) = B \cdot \left( \frac{1-p_1(x)}{1-\theta(x^*)} \right)^{\frac{r}{r+\lambda}}, \quad \lim_{x \rightarrow 0^+} \tilde{V}_1(x) = 0. \quad (6.4)$$

Using (6.2) and (6.3) one obtains

$$-1 = p_1'(x) \cdot \left( \frac{x}{p_1(x)} + \frac{\sigma^2+r+\lambda}{r+\lambda} \cdot \frac{x}{1-p_1(x)} \right)$$

$$= p_1'(x) \cdot \left( \frac{x}{p_1(x)} + \frac{\sigma^2 + r + \lambda}{r + \lambda} \cdot \frac{1 - \theta(x^*)}{(\theta(x^*)x^*)^{\frac{r+\lambda}{r+\lambda+\sigma^2}}} \cdot \frac{x^{\frac{\sigma^2}{r+\lambda+\sigma^2}}}{p_1(x)^{\frac{\lambda+r}{\lambda+r+\sigma^2}}} \right).$$

Since  $p_1$  is monotone decreasing, it follows that  $p_1''(x) > 0$  for all  $x \in ]0, x^*[$ . In turn, this yields

$$(r + \lambda)(1 - p_1) + \left( \frac{\lambda + r}{p_1} + \sigma^2 \right) x p_1' + \frac{\sigma^2 x^2}{2} p_1'' > 0.$$

Recalling (2.18), we have

$$(r + \lambda)(1 - p_1) + H_\xi(x, \xi, p_1) p_1' + \frac{\sigma^2 x^2}{2} p_1'' > 0 \quad \text{for all } \xi \geq 0. \quad (6.5)$$

Next, differentiating both sides of the first ODE in (6.2), we obtain

$$\left( r - \sigma^2 - \frac{\lambda + r}{p_1} + \frac{(\lambda + r)p_1'}{p_1^2} x \right) \cdot \tilde{V}_1' = \left( \frac{\lambda + r}{p_1} + \sigma^2 \right) x \tilde{V}_1'' \quad \text{for all } x \in ]0, x^*[.$$

This implies

$$\tilde{V}_1''(x) < 0 \quad \text{for all } x \in ]0, x^*[.$$

Recalling (2.17) and (6.2), we obtain

$$-r\tilde{V}_1 + H(x, \tilde{V}_1', p_1) + \frac{\sigma^2 x^2}{2} \tilde{V}_1'' < 0. \quad (6.6)$$

When  $x \geq \frac{1}{\lambda+r}$ , the map  $p \mapsto H(x, \xi, p)$  is monotone decreasing. Defining

$$V_1(x) \doteq \begin{cases} \tilde{V}(\frac{1}{r+\lambda}) & \text{for } x \in \left[0, \frac{1}{r+\lambda}\right], \\ \tilde{V}(x) & \text{for } x \in \left[\frac{1}{r+\lambda}, x^*\right], \end{cases}$$

we thus have

$$-rV_1(x) + H(x, V_1'(x), q) + \frac{\sigma^2 x^2}{2} V_1''(x) \leq 0 \quad \text{for all } q \geq p_1(x). \quad (6.7)$$

**2.** We now construct the functions  $V_2, p_2$ . Defining

$$\tilde{p}_2(x) \doteq \frac{1}{x} \left( \theta(x^*)x^* + \frac{2}{r - \mu} \right),$$

a straightforward computation yields

$$\tilde{p}_2'(x) = -\frac{\tilde{p}_2(x)}{x} < 0, \quad \tilde{p}_2''(x) = 2 \cdot \frac{\tilde{p}_2(x)}{x^2}.$$

Set

$$x_2 \doteq \theta(x^*)x^* + \frac{2}{r - \mu}, \quad (6.8)$$

and consider the continuous function

$$p_2(x) = \min \{1, \tilde{p}_2(x)\}. \quad (6.9)$$



For  $x \in [0, x_2[$  one has  $p_2(x) = 1$  and hence

$$(r + \lambda)(1 - p_2) + H_\xi(x, \xi, p_2)p_2' + \frac{\sigma^2 x^2}{2} p_2'' = 0.$$

On the other hand, for  $x \in ]x_2, x^*[$  and  $\xi \geq 0$ , one has  $p_2(x) = \tilde{p}_2(x) < 1$ , and

$$H_\xi(x, \xi, p_2) \geq \frac{(\lambda + r)x - 1}{p_2} + (\sigma^2 - \lambda - \mu)x \geq (r - \mu)x_1 - 1 = (r - \mu)\theta(x^*)x^* + 1 \geq 0. \quad (6.10)$$

Recalling (2.18), we get

$$\begin{aligned} & (r + \lambda)(1 - p_2) + H_\xi(x, \xi, p_2)p_2' + \frac{\sigma^2 x^2}{2} p_2'' \\ & \leq (r + \lambda)(1 - p_2) + \left[ \frac{(\lambda + r)x - 1}{p_2} + (\sigma^2 - \lambda - \mu)x \right] p_2'(x) + \frac{\sigma^2 x^2}{2} p_2'' \\ & = (r + \lambda)(1 - p_2) - \left[ \frac{(\lambda + r)x - 1}{p_2} + (\sigma^2 - \lambda - \mu)x \right] \cdot \frac{p_2(x)}{x} + \sigma^2 p_2 \\ & = (r + \lambda)(1 - p_2) - \left[ (\lambda + r) - \frac{1}{x} + (\sigma^2 - \lambda - \mu)p_2 \right] + \sigma^2 p_2 \\ & = \frac{1}{x} - (r - \mu)p_2 = -\frac{(r - \mu)\theta(x^*)x^*}{x} - \frac{1}{x} < 0. \end{aligned}$$

In particular,

$$(r + \lambda)(1 - p_2) + H_\xi(x, \xi, p_2) \cdot p_2' + \frac{\sigma^2 x^2}{2} p_2'' \leq 0 \quad \text{for all } x \in ]0, x^*[ , \xi \geq 0. \quad (6.11)$$

Next, define

$$V_2(x) \doteq (1 - p_2(x))B \quad \text{for all } x \in [0, x^*]. \quad (6.12)$$

For all  $x \in [0, x_2]$ , we thus have  $V_2(x) = 0$ , and hence

$$-rV_2 + H(x, V_2', q) + \frac{\sigma^2 x^2}{2} V_2'' = H(x, 0, q) = 0 \quad \text{for all } q \in ]0, 1]. \quad (6.13)$$

On the other hand, for  $x \in ]x_2, x^*[$  we have

$$V_2'(x) = B \cdot \frac{p_2(x)}{x} > 0 \quad \text{and} \quad V_2''(x) = -2B \cdot \frac{p_2(x)}{x^2}.$$

Recalling (2.17), (6.9), (6.10) and (6.8), we estimate

$$\begin{aligned} -rV_2 + H(x, V_2', p_2) + \frac{\sigma^2 x^2}{2} V_2'' & \geq -rV_2 + \left( \frac{(\lambda + r)x - 1}{p_2} + (\sigma^2 - \lambda - \mu)x \right) V_2' + \frac{\sigma^2 x^2}{2} V_2'' \\ & = B \cdot \left[ rp_2 - r + \left( \lambda + r - \frac{1}{x} + (\sigma^2 - \lambda - \mu)p_2(x) \right) - \sigma^2 p_2 \right] \\ & = B \cdot \left( \lambda - \frac{1}{x} - (\lambda + \mu - r)p_2 \right) = B \cdot \left[ \lambda(1 - p_2(x)) + (r - \mu)p_2(x) - \frac{1}{x} \right] > 0 \end{aligned}$$

for all  $x \in ]x_2, x^*[$ .

Recalling (6.8), one has

$$(\lambda + r)x > 1 \quad \text{for all } x \in ]x_2, x^*].$$

Therefore the map  $p \rightarrow H(x, V_2'(x), p)$  is monotone decreasing on  $[0, 1]$ , for all  $x \in ]x_2, x^*]$ . This implies

$$-rV_2 + H(x, V_2', q) + \frac{\sigma^2 x^2}{2} V_2'' \geq 0 \quad \text{for all } x \in ]x_2, x^*], \quad q \in ]0, p_2(x)].$$

Together with (6.13), we finally obtain

$$-rV_2(x) + H(x, V_2'(x), q) + \frac{\sigma^2 x^2}{2} V_2''(x) \geq 0 \quad \text{for all } x \in ]0, x^*[, \quad q \in ]0, p_2(x)]. \quad (6.14)$$

Relying on (6.5), (6.6), (6.11) and (6.14), and using the same comparison argument as in the proof of Theorem 3.1 we now prove

**Theorem 6.1.** *In addition to (A1), assume that  $\sigma > 0$  and  $\theta(x^*) > 0$ . Then the system (2.15) with boundary conditions (2.16) admits a solution  $(V(\cdot, x^*), p(\cdot, x^*))$  satisfying the bounds (6.1) for all  $x \in [0, x^*]$ .*

*Proof.*

1. Recalling  $\mathcal{D}$  in (3.6), we claim that the domain

$$\mathcal{D}^0 = \left\{ (V, p) \in \mathcal{D} \mid (V(x), p(x)) \in [V_2(x), V_1(x)] \times [p_1(x), p_2(x)], \quad \text{for all } x \in [0, x^*] \right\} \quad (6.15)$$

is positively invariant for the semigroup  $\{S_t\}_{t \geq 0}$ , generated by the parabolic system (3.3)-(3.4). Namely:

$$S_t(\mathcal{D}^0) \subseteq \mathcal{D}^0 \quad \text{for all } t \geq 0.$$

Indeed, from the proof of Theorem 3.1, we have

$$p_x(t, x) \leq 0 \leq V_x(t, x) \quad \text{for all } t > 0, x \in ]0, x^*]. \quad (6.16)$$

We now observe that

- (i) For any  $V(\cdot, \cdot)$  with  $V_x \geq 0$ , by (6.5) the function  $p(t, x) = p_1(x)$  is a subsolution of the second equation in (3.2). Similarly, by (6.11), the function  $p(t, x) = p_2(x)$  is a supersolution.
- (ii) For any  $p(\cdot, \cdot)$  with  $p \in [0, 1]$  and  $p_x \leq 0$ , by (6.7) the function  $V(t, x) = V_1(x)$  is a supersolution of the first equation in (3.2). Similarly, by (6.14), the function  $V(t, x) = V_2(x)$  is a subsolution.

Together, (i)-(ii) imply the positive invariance of the domain  $\mathcal{D}^0$ .

2. Using the same argument as in step 4 of the proof of Theorem 3.1, we conclude that the system (2.15)-(2.16) admits a solution  $(V, P) \in \mathcal{D}^0$ .

□

**Corollary 6.2.** *Let the assumptions in Theorem 6.1 hold. If*

$$\limsup_{s \rightarrow +\infty} \theta(s) s = +\infty,$$

*then, for all  $x \geq 0$ , the value function  $V(\cdot, x^*)$  satisfies*

$$\lim_{x^* \rightarrow \infty} V(x, x^*) = 0. \quad (6.17)$$

*Proof.* Using (4.3), (6.4) and Theorem 6.1, we have the estimate

$$V(x, x^*) \leq V_1(x) = B \cdot \left( \frac{1 - p_1(x)}{1 - \theta(x^*)} \right)^{\frac{r}{r+\lambda}} \leq B \cdot \left( \frac{x}{\theta(x^*)x^*} \right)^{\frac{r}{r+\lambda+\sigma^2}}$$

for all  $x \geq \frac{1}{r+\lambda}$ . This implies that (6.17) holds for all  $x \geq \frac{1}{r+\lambda}$ . Since  $x \mapsto V(x, x^*)$  is monotone increasing, we then have

$$0 \leq \lim_{x^* \rightarrow \infty} V(x, x^*) \leq \lim_{x^* \rightarrow \infty} V\left(\frac{1}{r+\lambda}, x^*\right) = 0 \quad \text{for all } x \in \left[0, \frac{1}{r+\lambda}\right].$$

This completes the proof of (6.17). □

**Corollary 6.3.** *Let the assumptions in Theorem 6.1 hold. If*

$$C_1 \doteq \limsup_{s \rightarrow +\infty} \theta(s) s < +\infty,$$

*then*

$$\liminf_{x^* \rightarrow \infty} V(x, x^*) \geq B \cdot \left(1 - \frac{C_2}{x}\right) \quad \text{for all } x > M_2, \quad (6.18)$$

*where the constants  $C_2, M_2$  are defined as*

$$C_2 \doteq C_1 + \frac{2}{r - \mu} \quad \text{and} \quad M_2 \doteq \frac{\lambda + \mu - r}{\lambda} C_1 + \frac{2\lambda + \mu - r}{\lambda(r - \mu)} + 1.$$

*Proof.* This follows from (6.9), (6.12) and Theorem 6.1. □

## 7 Concluding remarks

If we allow  $x^* = +\infty$ , then the equations (4.8) admit the trivial solution  $V(x) = 0$ ,  $p(x) = 1$ , for all  $x \geq 0$ . This corresponds to a Ponzi scheme, producing a debt whose size grows exponentially, without bounds. In practice, this is not realistic because there is a maximum amount of liquidity that the market can supply. It is interesting to understand what happens when this bankruptcy threshold  $x^*$  is very large.

Our analysis has shown that three cases can arise, depending on the fraction  $\theta$  of outstanding capital that lenders can recover.

- (i) If  $\lim_{s \rightarrow +\infty} \theta(s) s = +\infty$ , then it is convenient to choose  $x^*$  as large as possible. By delaying the time of bankruptcy, the expected cost for the borrower, exponentially discounted in time, approaches zero.

- (iii) If  $\lim_{s \rightarrow +\infty} \theta(s) s < +\infty$  and (5.16) holds then it is still convenient to choose  $x^*$  as large as possible. However, by delaying the time of bankruptcy, the cost to the borrower remains uniformly positive.
- (iii) If  $\lim_{s \rightarrow +\infty} \theta(s) s < +\infty$  and (5.18) holds, then for every initial value  $x_0$  of the debt there is a choice  $x^*(x_0)$  of the bankruptcy threshold which is optimal for the borrower.

Examples corresponding to three cases (i)–(iii) are obtained by taking

$$\theta(s) = \min \left\{ 1, \frac{R_0}{s^\alpha} \right\} \quad (7.1)$$

with  $0 < \alpha < 1$ ,  $\alpha = 1$ , or  $\alpha > 1$ , respectively.

It is important to observe that the choice of the optimal bankruptcy threshold  $x^*$  is never “time consistent”. Indeed, at the beginning of the game the borrower announces that he will declare bankruptcy when the debt reaches size  $x^*$ . Based on this information, the lenders determine the discounted price of bonds. However, when the time  $T_b$  comes when  $x(T_b) = x^*$ , it is never convenient for the borrower to declare bankruptcy. It is the creditors, or an external authority, that must enforce termination of the game.

To see this, assume that at time  $T_b$  when  $x(T_b) = x^*$  the borrower announces that he has changed his mind, and will declare bankruptcy only at the later time  $T'_b$  when the debt reaches  $x(T'_b) = 2x^*$ . If he chooses a control  $u(t) = 0$  for  $t > T_b$ , his discounted cost will be

$$e^{-(T'_b - T_b)r} B < B.$$

This new strategy is thus always convenient for the borrower. On the other hand, it can be much worse for the lenders. Indeed, consider an investor having a unit amount of outstanding capital at time  $T_b$ . If bankruptcy is declared at time  $T_b$ , he will recover the amount  $\theta(x^*)$ . However, if bankruptcy is declared at the later time  $T'_b$ , his discounted payoff will be

$$\int_{T_b}^{T'_b} (r + \lambda) e^{-(r+\lambda)(t-T_b)} dt + e^{-(r+\lambda)(T'_b - T_b)} \theta(2x^*).$$

To appreciate the difference, consider the deterministic case, assuming that  $\theta(\cdot)$  is the function in (7.1), with  $\alpha \geq 1$ , and that  $x^* \geq M_1$ . By the analysis at the beginning of Section 5, we have  $u^*(x) = 0$  for all  $x \in [x^*, 2x^*]$ . Replacing  $x^*$  with  $2x^*$  in (5.4) we obtain that the solution to (5.3) with terminal data

$$p(2x^*) = \theta(2x^*) = \frac{R_0}{(2x^*)^\alpha}$$

satisfies

$$p_B(x^*, 2x^*) = 2\theta(2x^*) \cdot \left( \frac{1 - p_B(x^*, 2x^*)}{1 - \theta(2x^*)} \right)^{\frac{r-\mu}{r+\lambda}} < 2\theta(2x^*) = 2^{1-\alpha}\theta(x^*) \leq \theta(x^*).$$

If the investors had known in advance that bankruptcy is declared at  $x = 2x^*$  (rather than at  $x = x^*$ ), the bonds would have fetched a smaller price.

In conclusion, if the bankruptcy threshold  $x^*$  is chosen by the debtor, the only Nash equilibrium can be  $x^* = +\infty$ . In this case, the model still allows bankruptcy to occur, when total debt approaches infinity in finite time.

## References

- [1] M. Aguiar and G. Gopinath, Defaultable debt, interest rates and the current account. *J. International Economics* **69** (2006), 64–83.
- [2] H. Amann, Invariant sets and existence theorems for semilinear parabolic equation and elliptic system, *J. Math. Anal. Appl.* **65**, 432–467, 1978.
- [3] C. Arellano and A. Ramanarayanan, Default and the maturity structure in sovereign bonds. *J. Political Economy* **120** (2102), 187–232.
- [4] M. Bardi and I. Capuzzo Dolcetta, *Optimal Control and Viscosity Solutions of Hamilton-Jacobi-Bellman Equations*, Birkhäuser, 1997.
- [5] T. Basar and G. J. Olsder, *Dynamic Noncooperative Game Theory*, 2<sup>d</sup> Edition, Academic Press, London 1995.
- [6] A. Bressan, Noncooperative differential games. *Milan J. Math.* **79** (2011), 357–427.
- [7] A. Bressan and Y. Jiang, Optimal open-loop strategies in a debt management problem, submitted.
- [8] A. Bressan and Khai T. Nguyen, An equilibrium model of debt and bankruptcy, *ESAIM; Control, Optim. Calc. Var.*, to appear.
- [9] A. Bressan and B. Piccoli, *Introduction to the Mathematical Theory of Control*, AIMS Series in Applied Mathematics, Springfield Mo. 2007.
- [10] M. Burke and K. Prasad, An evolutionary model of debt. *J. Monetary Economics* **49** (2002) 1407-1438.
- [11] G. Calvo, Servicing the Public Debt: The Role of Expectations. *American Economic Review* **78** (1988), 647–661.
- [12] J. Eaton and M. Gersovitz, Debt with potential repudiation: Theoretical and empirical analysis. *Rev. Economic Studies* **48** (1981), 289–309.
- [13] G. Nuño and C. Thomas, Monetary policy and sovereign debt vulnerability, Working document n. 1517, Banco de España Publications, 2015.
- [14] B. Oksendahl, *Stochastic Differential Equations: An Introduction with Applications*. Springer-Verlag, 2013.
- [15] S. E. Shreve, *Stochastic calculus for finance. II. Continuous-time models*. Springer-Verlag, New York, 2004.